

Executive Director Report
Nancy N. Rabalais
Louisiana Universities Marine Consortium
On-Site Review by External Review Committee
26 September 2011

I assumed the Executive Director position in June 2005 quickly followed by Hurricanes Katrina and Rita that fall, Hurricanes Gustav and Ike in fall 2008, continuous state budget cuts, the BP Deepwater Horizon oil spill in 2010, and major flooding of the Mississippi River in 2011. Each has brought its own challenges. My director position (now six years) followed one year of the previous director, Dr. Mike Dagg, four years of an Interim Administrator, and the last external review of LUMCON in fall 2000.

2000 External Review of LUMCON

The 2000 External Review of LUMCON came after four years of a new governance structure from a 13-member board representing all institutions of higher education and three supervisory boards with an executive committee, to the present three-university Executive Board represented by Louisiana State University and A&M College, the University of Louisiana Lafayette, and Nicholls State University. Within a year of the 2000 review, Dr. Mike Dagg stepped down as Executive Director of LUMCON and Mr. Kerry St. Pé, the Director of the Barataria-Terrebonne Bay Estuary Program, became the Interim Administrator of LUMCON with Dr. David Boudreaux of Nicholls State University the oversight manager for personnel and budget. This situation continued for four years, until Dr. Rabalais was hired as Executive Director at the end of FY05.

The 2000 Review is now 10 years old; much remains relevant, but different significant factors are at play now in the status of LUMCON than at the time of that report.

Strengths continue to be:

- Reputation
- Quality of Faculty
- Quality of Staff
- Field Location and Environment
- Education Program
- Interdisciplinary Approach
- R/V *Pelican*

The stature of the R/V *Pelican* and the Vessel Operations section of LUMCON have increased substantially since 2000. Vessel Operations has become financially self-sufficient and supports many other aspects of LUMCON operations, especially marine education. The addition of the Barataria-Terrebonne National Estuary Program (BTNEP) in 2002 under the LUMCON umbrella brought additional funds (although proportionally dwindling over the last several years) and a strong public outreach component to the LUMCON/BTNEP enterprise.

Some of the *Issues and Threats* remain similar, but are aggravated by the currently dismal budgetary condition of the nation and the state, loss of tenure for LUMCON faculty, the fact that higher education and health and human resources are preferentially cut in the state budget, and the continued disengagement by the LUMCON Executive Board and the Board of Regents in their roles in the support and development of LUMCON at the same level of institutions of higher learning in the state.

- **Faculty Retention and Morale** – dependent on state support. LUMCON has lost an assistant and associate professor since 2001, was able to hire one, then two assistant professors, with an unfilled fourth faculty member TBN before budget cuts, and since then the resignation of an associate and assistant professor. The current number of six faculty members (including the Executive Director) is perilously low for the continuance of research programs internally, and as collaborative efforts with other state university researchers. The loss of the ability to grant tenure in 2006 has hampered recruitment. There are currently three unfilled faculty positions at LUMCON. The most recent resignation and an upcoming retirement hold the potential for the addition of two faculty members. The other lines have been absorbed in budget cuts. Three years without salary increases and instituted furloughs in the last two years have not been helpful in encouraging faculty engagement.
- **Morale of Research Staff** – this cycles through the years, but the lack of pay raises in the last three years and furloughs in previous two years have not helped. Two furlough schemes for state- or ICR-supported employees were employed in FY10 and FY11, (FY10) across the board 3%, no ability to make up with funds, and (FY11) 3 to 13.5% cuts with the ability to offset from special funds or research grants. The latter made it possible for most to avoid the furloughs other than some faculty and the executive director.
- **External Expectations and Concerns** – lack of access to labs and office space has been minimized in the last six years. But, features that LUMCON provided to visitors at no cost (because LUMCON is state-funded) have been lost as the state-supported portion of the LUMCON budget dwindles.
- **Funding Level** – the state funding level for LUMCON remains “appallingly low” for support of LUMCON’s functions and ability to attract external funding.
- **Administration** – the administration is now directly and actively involved in the state budgetary process.
- **A Dysfunctional Consortium** – this was a historical situation that has been overcome by providing an open access, equal partnership with the governing institutions and all other Louisiana institutions. It remains puzzling that member universities do not know how well they are served. This can be due to the disconnect between university administration and faculty who use the facility, or poor LUMCON branding and outreach, or both.
- **Engagement of Executive Board and Advisory Committee** – the recommendation of the 2000 review was for stakeholders “closer to the enterprise of marine science” to be engaged. The governance of LUMCON and engagement continue to be an issue of concern. Stakeholders do not carry the full stature of the higher leadership, but the higher leadership individuals are busy and removed from the “enterprise.”
- **Faculty Size** – was on a trajectory of increase after 2005 but has now come burdened by resignations and state budget cuts.

- **Student Concerns** – difficult to respond to. Current students are mentored by faculty through various venues. Undergraduates take courses via video conference or at LUMCON in summer.
- **Support Facilities and Infrastructure** – times have changed for the library with less journals and greater online access. Visual perspective of LUMCON continues to be a factor in deferred maintenance. The public presentation of LUMCON has improved.
- **Additional Vessel to R/V *Pelican*** – this continues to be a priority but depends on federal and/or state funds.

Several **RECOMMENDATIONS** followed from the 2001 review. LUMCON was viewed as a viable and important component of the national coastal marine science complex. It was deemed imperative that the state maintain and strengthen the Consortium.

- **Strategic Planning and Vision Development** – was recommended. However, with the change in directorship to an Interim Director for a four-year period, this was not accomplished. In the remaining six years the budget situation has made it difficult to build for the future. However, it is wise for LUMCON with its investment community to develop a strategic plan.
- **Identifying Research Foci** – the movement towards more interdisciplinary topics that include coastal processes was an avenue deemed worthwhile. This avenue of faculty hires was instituted under the direction of Dr. Rabalais, current Executive Director.
- **Leadership Models** – the qualities advised for future leadership in an Executive Director have been achieved, after four years of interim leadership, and the hiring of Dr. Rabalais. The need for an engaged Executive Board remains. The membership of such a board with individuals “closer” to LUMCON was advised, but my previous comments indicate that the leadership of a governing university must also be engaged. A call for regular evaluations of the executive director has been met since 2006 with an annual report of the executive director to the Executive Board. The executive director was granted a second 5-year appointment in 2010.
- **Faculty Guidance and Faculty Development** – this has improved with the current Executive Director.
- **Funding Models** – the need for additional state resources is noted, but has not been the case, either without state budget cuts or with state budget cuts. A relationship with the Board of Regents was accomplished during the tenure of Dr. Sally Clausen, but was limited by her duration. The need for external support was advised and remains an issue for improvement. Some external funding has been developed, but more is recommended.
- **Development** – noted above. LUMCON is expanding its support base. Specific ideas are qualified with restrictions of LUMCON not being a degree-granting institution. Other avenues for advancement of LUMCON goals are limited in the current financial atmosphere.
- **Links with the Universities: the Consortium** - this aspect of LUMCON has improved substantially since the change from a 13-member to a 3-member governing structure. Some is the result of time, but much is directed actions by the LUMCON executive director, K-12 program, university education program, and the LUMCON faculty to dissolve the historical frustration with loss of voting guidance.
- **Planning for Facilities and Long-Term Capital Outlay** – this was a positive, developing activity until the state budget cuts.

- **System-wide Communications** – LUMCON is now well-known in the state and outside of the state, and was at the time of the 2000 review. LUMCON is perhaps more well known in the state and externally now than in the past.
- **Regular Reviews** – A five-year review is recommended. The Executive Director provides to the Executive Board an annual performance statement.
-

LUMCON at Present

LUMCON was formed by an act of the 1979 Louisiana Legislature. Capital outlay funds provided for the construction of the Marine Center in Cocodrie, some of its initial furnishings and equipment, and the acquisition of R/V *Pelican* in 1985 and R/V *Acadiana* in 1986. A LUMCON history was provided in the initial documentation sent to the review committee.

This document provides an 11-year history of LUMCON since the 2000 External Review with data from the LUMCON files and the Louisiana Performance Accountability System (LaPAS, at <http://doa.louisiana.gov/opb/lapas/login.htm>) for the Division of Higher Education - 19A, and the Louisiana Universities Marine Consortium - 674, for fiscal years 1999-2011. The most meaningful indicators are provided here, or those that have the most complete history. Several of the indicators do not have a complete record—some indicators have changed, the LaPAS system does not always report everything turned in—or there are questionable records—inconsistency in reporting, not well-defined categories, approaches to categories change with reporter compilations. Dr. Rabalais submitted a new suite of indicators to the Division of Administration (DOA) in 2010 to better define the LUMCON performance measures in support of its mission, but the DOA chose not to accept them.

LUMCON continues to meet its mission, which is stated in the 1979 legislation:

To increase society's awareness of the environmental, economic and cultural value of Louisiana's coastal and marine environments by conducting research and education programs directly relevant to Louisiana's needs in marine science and coastal resources and serving as a facility for all Louisiana schools with interest in marine research and education.

LUMCON has active research and education programs, supports and operates facilities for the work of its researchers, staff, visiting scientists, university students, and a large K-12, public and teacher audience; and transfers the research and education efforts into useful information for the science community and to support citizens and policy-makers with regard to critical issues on living and non-living resources within Louisiana and the Gulf of Mexico. Many of the research and education endeavors reach beyond the Gulf coast into the remainder of the United States and internationally.

Facilities

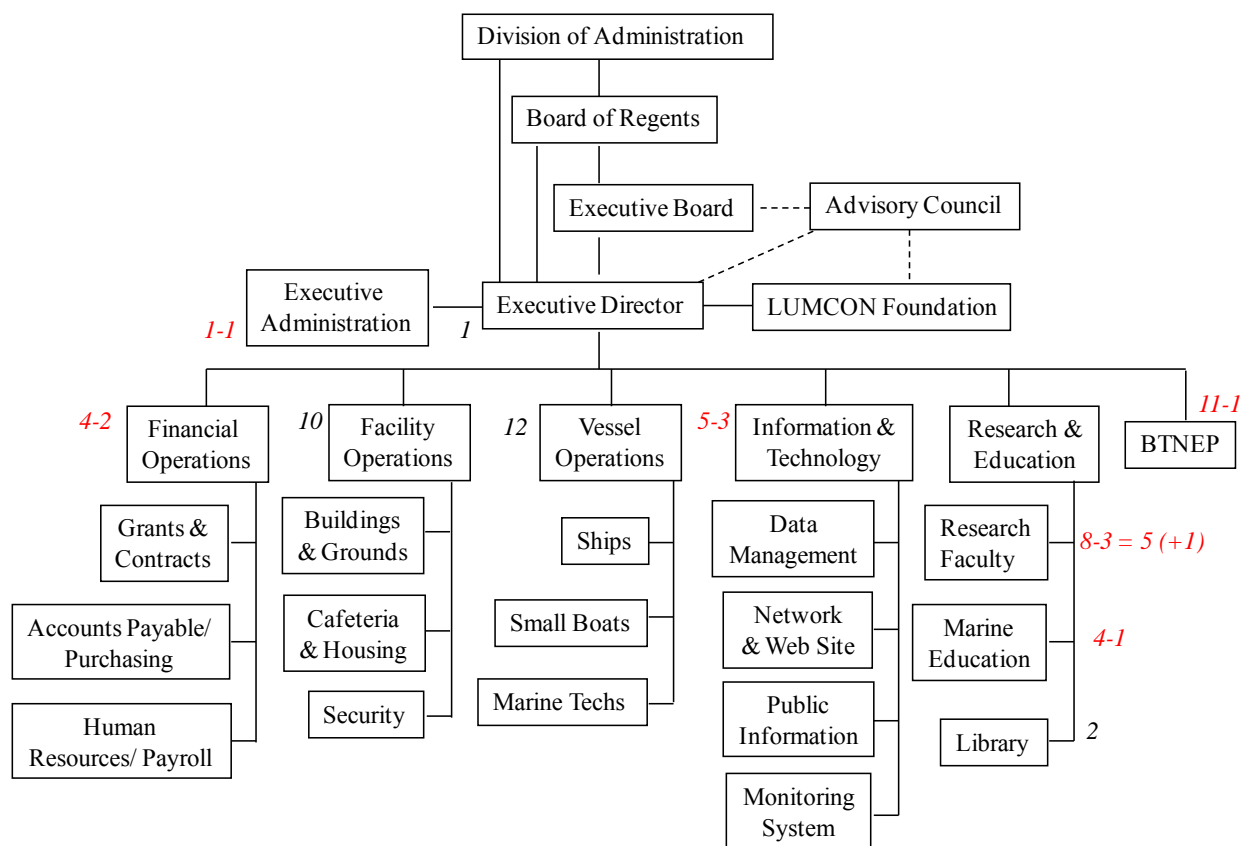
Several brochures sent with the initial review materials outline the LUMCON facilities. The “Welcome to LUMCON” and the “2011 Open House” brochures best describe the facilities.

An NSF-type description of facilities is appended to this document. And, you will be visiting us, which makes us more able to show off our campus.

Governance

LUMCON's governance structure was provided in the initial documents, p. 40 of the briefing booklet. The briefing book also described the vested authorities of the LUMCON Executive Board and the Executive Director. The current Executive Director, Dr. Nancy Rabalais was hired in June 2005, has completed one five-year contract, and has entered into another five-year contract in June, 2010. The Executive Board hires (and fires) the Executive Director who reports to the Executive Board and the Board of Regents.

The governance of LUMCON was changed in 1995 by amendment of the authorizing legislation from a Council of 13 member institutions and boards of higher education with an Executive Committee of five members to a Executive Board of the chancellor and a vice chancellor from Louisiana State University and Agricultural and Mechanical College in Baton Rouge, the president and a vice president of Nicholls State University, and the president and a vice president of the University of Southwestern Louisiana (now the University of Louisiana Lafayette).



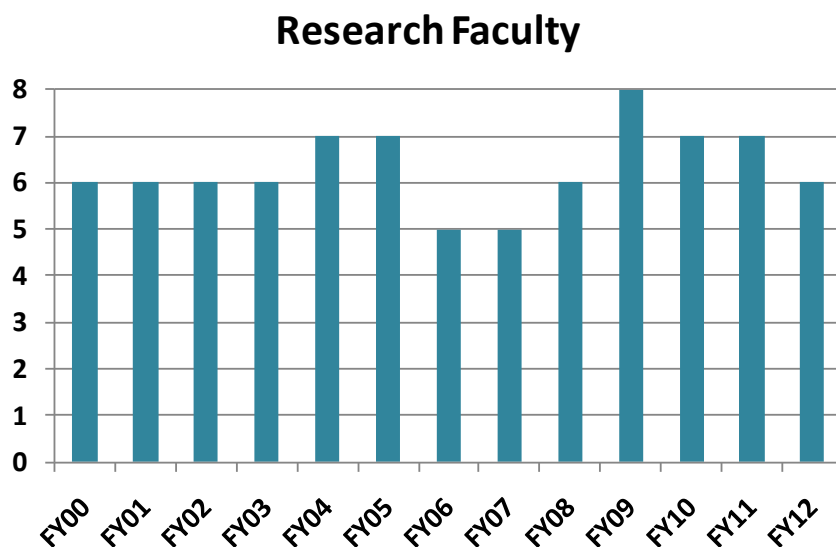
The Executive Director reports directly to the Board of Regents and the Division of Administration mostly on fiscal matters. These actions eventually require approval by the

Executive Board, but the Executive Director manages the fiscal and staff reporting directly with the capable help of the Finance Director.

Staffing

The organizational chart reflects the number of employees by category next to major divisions with red numbers indicating unfilled positions. A list of employees is appended.

For the research faculty there was a low of five at the end of FY06, with the resignation of two associate professors. We were able to hire one assistant professor in FY08 and two more in FY09 with a fourth planned with funds in FY09. Then the budget cuts began. There were two resignations of an associate and an assistant professor in FY10 and FY12, respectively. The salary of the resignation in FY10 was absorbed by the budget cuts. The salary of the assistant professor who resigned in FY12 should be available for advertisement and hire. LUMCON also has a retirement of a professor at the end of FY12 that can be converted to an additional (or two) assistant professor(s). There is also an aging senior research faculty at LUMCON, three faculty members over 60 years old, and will be retiring in the next five to ten years. This will leave a void in LUMCON's research leadership.



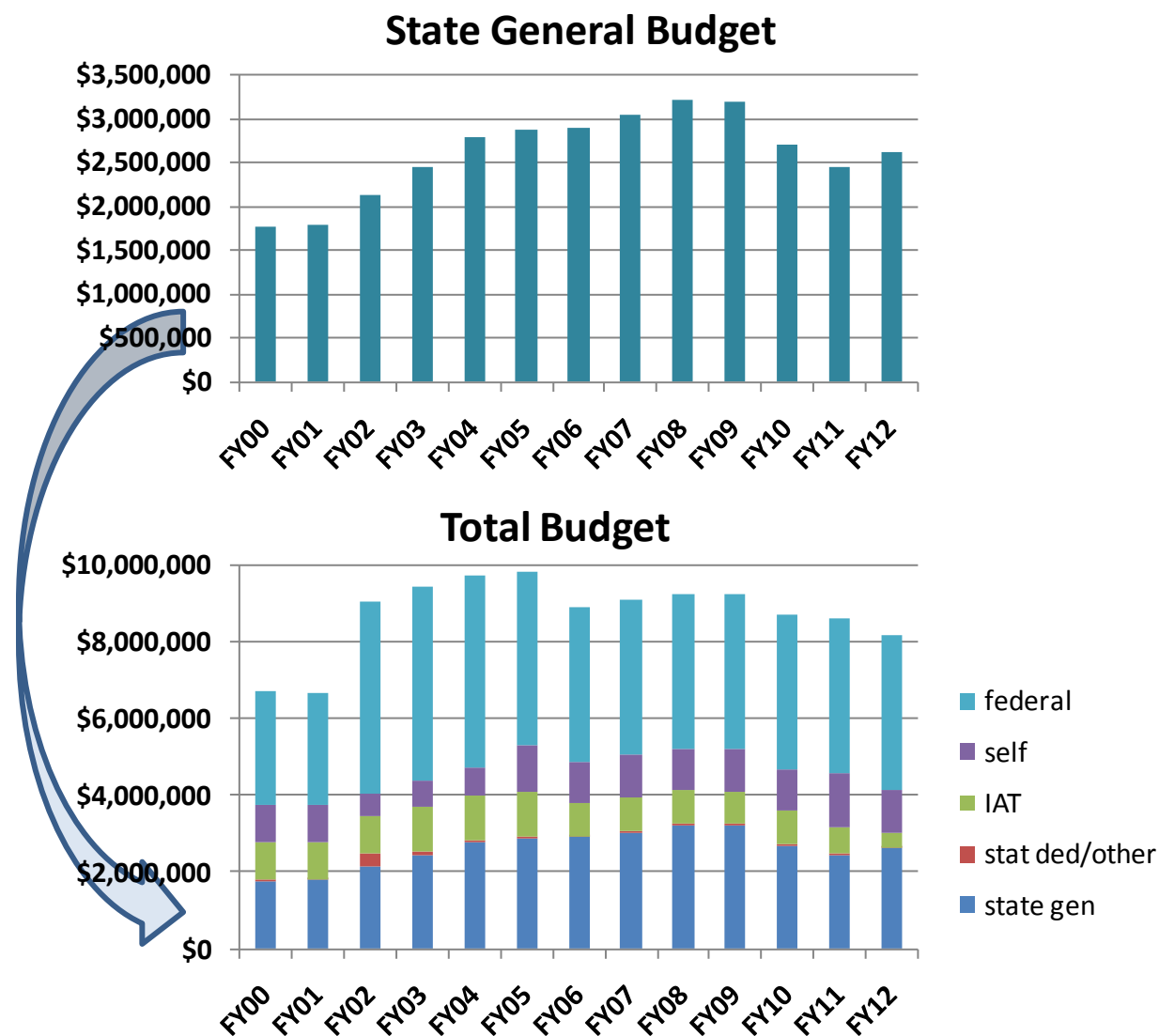
Of the non-research faculty, some unfilled positions will not be filled until additional funds are put into the State portion of the LUMCON budget. Others will be hired as replacements for which funds are available. Some will be generated from the recently awarded BP GRI research award. Some will remain unfilled. Of those in red, I would say that 6 are not likely to be replaced, until the budget situation improves. However, there is the possibility for continuation of the BP GRI research awards for some time if the LUMCON team remains productive.

The overall research support staff varies with the success of principal investigators in research awards. There are currently 10 research support individuals at LUMCON, which is a relatively low number. There is the possibility of two postdoctoral research associates, two

research associates, one technician, and one graduate student as a result of the BP GRI research award.

Budget History and Status

The LUMCON budget, including all categories, has averaged \$8 to \$10 million over the last 10 years. The state general budget proportion has ranged from \$1.75 to \$3.2 million. The large increase in state support in FY02 was due to the addition of the Barataria-Terrebonne National Estuary Program to the LUMCON budget from the Louisiana Department of Environmental Quality and the inclusion of matching funds for the national U.S. EPA award. There was a gradual increase in the state portion of the LUMCON budget through FY08, without federal ARRA funds. Beginning in FY08, budget cuts started to diminish the state portion of the LUMCON budget along with other higher institutions of Louisiana.



During the period of the budget cuts, LUMCON was cut proportionally with other institutions of higher education, even though LUMCON had not received ARRA funds nor was it able to generate extra income through tuition and fee increases. This situation exists because LUMCON is not a degree granting institution, and the courses it teaches accrue tuition and credits to the member universities. The current situation is for the formula for the universities to take into account graduation rate. Again, LUMCON is left outside of this structure and suffers proportionally more in budget cuts than those institutions of higher education that can raise tuition and fees. A similar situation exists for LSU's Ag Center and Pennington Biomedical Research Center.

The choices made to meet the budget cuts are not popular, wise, or conducive to maintaining a high level of performance.

LOUISIANA UNIVERSITIES MARINE CONSORTIUM

Options

Continue Unfilled Positions:

Senior Educator
Administrative Assistant
Finance (two)
IT (three)
Faculty (three)
Furloughs (two years)
No salary Increases (three years)

Reductions:

Additional Staff
Additional Faculty
Closures:
No summer school
No semester courses
Close Fourchon field camp
Reduced hours of operation

Implications:

Failure to fulfill marine research and education mission
Loss of valuable programs, endangerment of BTNEP (Barataria-
Terrebonne National Estuary Program)
Reduced external funding
Little contribution to education in higher education
Loss of services for university researchers and educators
Reduction in K-12, teacher and public outreach
Deterioration of property and facilities
Loss of coastal expertise and support of important Louisiana issues

One small budget **remedy** to this inequity would be for the member institutions to return a percentage of its tuition and fees for LUMCON-taught courses to LUMCON (suggest 67%) for its costs in teaching courses that accrue credits to member universities. This mechanism would need to be supported by the LUMCON Executive Board and the Board of Regents. This action runs counter to the agreement in the formation of LUMCON that returned the tuition to the member institutions so that LUMCON would not be perceived or actualized as competing with the member institutions. A 2/3 tuition return from private universities was achieved by LUMCON through 1998, but not pursued after the change in the university education

coordinator at that time. The amount of money that would be transferred from all member institution would be minimal, but would certainly be useful to LUMCON in the administration of its university education programs.

A second, and more important, **remedy** would be for the Board of Regents to institute a more equal distribution of budget cuts among all institutions of higher education, with inclusion of research and education metrics outside of the formula that depends on graduation rates.

Research Enterprise

The remaining proportions of the overall LUMCON budget are composed of state statutory funds (limited), self funds (dedicated to faculty raises and diminishing), interagency transfers (in and out), and federal or other grants, which comprise a continuing greater proportion of the total LUMCON budget. The ratio of external funds to state funds increases as the state budget decreases and as the research faculty generates more external awards. The ability to generate external research funds has remained steady at \$3 to \$4 million per year. This ability, however, is limited by the number of successful and fully engaged faculty that generate external funds. LUMCON is currently three faculty members less than allocated. The ability of the LUMCON faculty to generate external funds will be tested in the coming years with further federal budget cuts, particularly to NOAA, EPA and NSF.

LUMCON has five broad research foci which encompass most external awards generated by the research faculty—

- **RIVER/OCEAN INTERACTIONS**

The Mississippi River system drains 41% of the lower 48 United States and delivers massive quantities of fresh water, sediments, and associated nutrients and chemical constituents to the adjacent continental shelf and northern Gulf of Mexico. Research programs focus on aspects of the river-shelf mixing zones and human alterations of the river and its constituents that modify the coastal zone and ocean. The Mississippi River discharge, from the current birdfoot delta southeast of New Orleans and via the Atchafalaya River on the central coast, is a dominant influence on the offshore ends of Louisiana estuaries and is increasing on the upper ends with present and planned diversions of Mississippi River water, sediments, nutrients and chemical constituents into Louisiana estuaries. Specific programs address nutrient cycling, carbon transformations, continental shelf sediments as records of historical change, the interaction of phytoplankton and zooplankton communities in nutrient and carbon budgets, and the distribution and dynamics of extensive zones of oxygen-depleted waters.

- **COASTAL PRODUCTIVITY**

The estuaries and coastal waters of Louisiana team with living resources that contribute significantly to wildlife populations, commercial and recreational fisheries, and a Louisiana way of life. The success of these resources depends on an infrastructure of healthy, functioning ecosystems, such as salt marshes, mangrove stands, open bay bottoms, barrier island shores, and the coastal ocean. Several studies focus on food webs, trophic structure, and interacting biological, chemical and physical processes that support Louisiana's high biological productivity. Several programs examine the relative abundance of groups of phytoplankton, including noxious and potentially harmful forms, in relation to nutrients that support their

growth, and grazers, such as bacterioplankton, zooplankton and benthic filter feeders that control phytoplankton growth. Others focus on the transfer and fate of carbon in food webs.

- **LIVING RESOURCES**

Commercial and recreational fisheries are a key component of Louisiana's environmental and economic resources. Management of these fisheries and the food webs that support them is essential in the presence of environmental deterioration, including coastal land loss and the detrimental effects of nutrient enrichment, such as noxious algal blooms and bottom-water oxygen deficiency. Research focuses on the early stages of fish larvae, including foraging capabilities, biochemical and morphometric responses to changes in feeding conditions, and the use of otoliths to record the environmental and chemical conditions of growth. The ability to rear larval fishes for potential aquaculture targets red drum, pompano, mangrove and red snapper, and cobia. Related studies include the dynamics of benthic organisms as prey in oxygen-depleted waters, mechanisms affecting the growth and health of coral reefs, and the characterization of similar 'hard substrate' fouling communities on offshore oil and gas platforms within Louisiana's waters, and the cycling of mercury in water, sediments, and fish and effects on human consumers of seafood.

- **HUMAN AND INDUSTRIAL IMPACTS**

Some of the most intense oil and gas extraction activities in the world occur within Louisiana's wetland, coastal and offshore environments. Studies have focused on the fate and effects of produced water discharges (oilfield brine) in coastal Louisiana and the potential for these effluents to influence hypoxia formation. Research on the communities associated with offshore oil platforms and the fishes attracted to the structures focus on the importance of these habitats in offshore waters. Land use activities within the Louisiana coastal zone (agriculture, urban development, air pollution) and externally (the Mississippi River watershed) contribute to increased levels of nutrient loading in coastal ecosystems. Several research programs focus on the effects of altered nutrient concentrations in the Mississippi River discharge on coastal productivity, phytoplankton community composition, harmful algal blooms and indicators of oxygen stress.

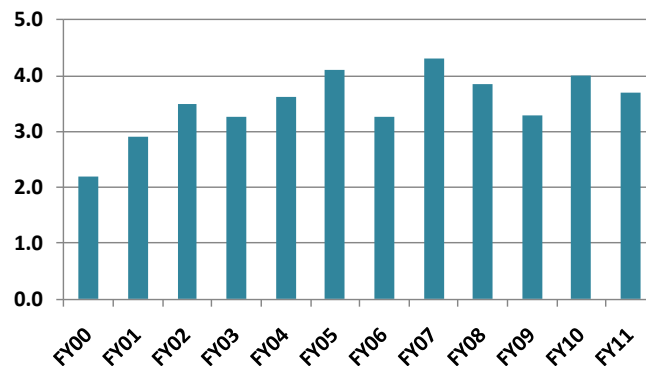
- **COASTAL CHANGE AND RELATED PROCESSES**

Wetland loss and barrier island erosion continue to be major problems in the Louisiana coastal zone. The importance of these natural lines of protection against flooding and storm were blatantly demonstrated in the 2005 hurricane season with Katrina and Rita. LUMCON researchers study animal-sediment and predator-prey interactions on barrier islands and in salt marshes. LUMCON facilitates studies of sediment processes, plant communities, and change in habitat and living resources through its support and collaboration with the research and educational programs of the Barataria-Terrebonne National Estuary Program, as the fiscal agent for the Coastal Wetlands Planning, Protection and Restoration Act, via Louisiana State University, and as fiscal agent and member of the Board of Directors for CREST, the Coastal Restoration and Enhancement through Science and Technology program, also at LSU. LUMCON also serves as the logistical center for several marsh experiments in areas near the Marine Center.

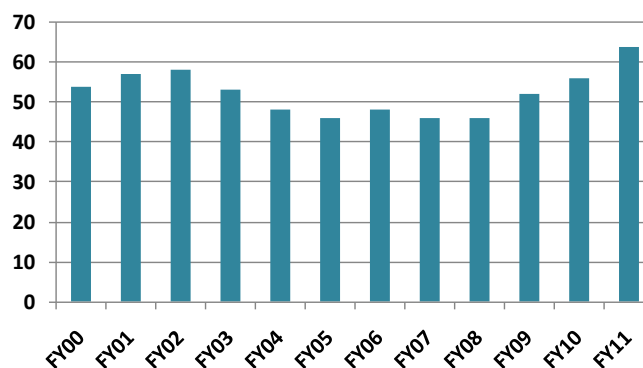
LUMCON was successful in competing in the first round of the BP GRI RFP-I awards for Deepwater Horizon oil spill research with a grant of \$12+ million over three years. Much of the funds go to collaborating institutions and scientists but almost \$4 million over three years will be retained for science by LUMCON faculty and for administrative, education and outreach,

and data management needs. The fact that LUMCON was awarded one of the two Louisiana BP GRI research awards is a testament of the researchers involved, their focused and relevant research plan, the researchers' proven ability to conduct interdisciplinary research and publish the results, and the proven ability of LUMCON to manage large, complex grants.

Grant \$ in Millions



Number of Grants

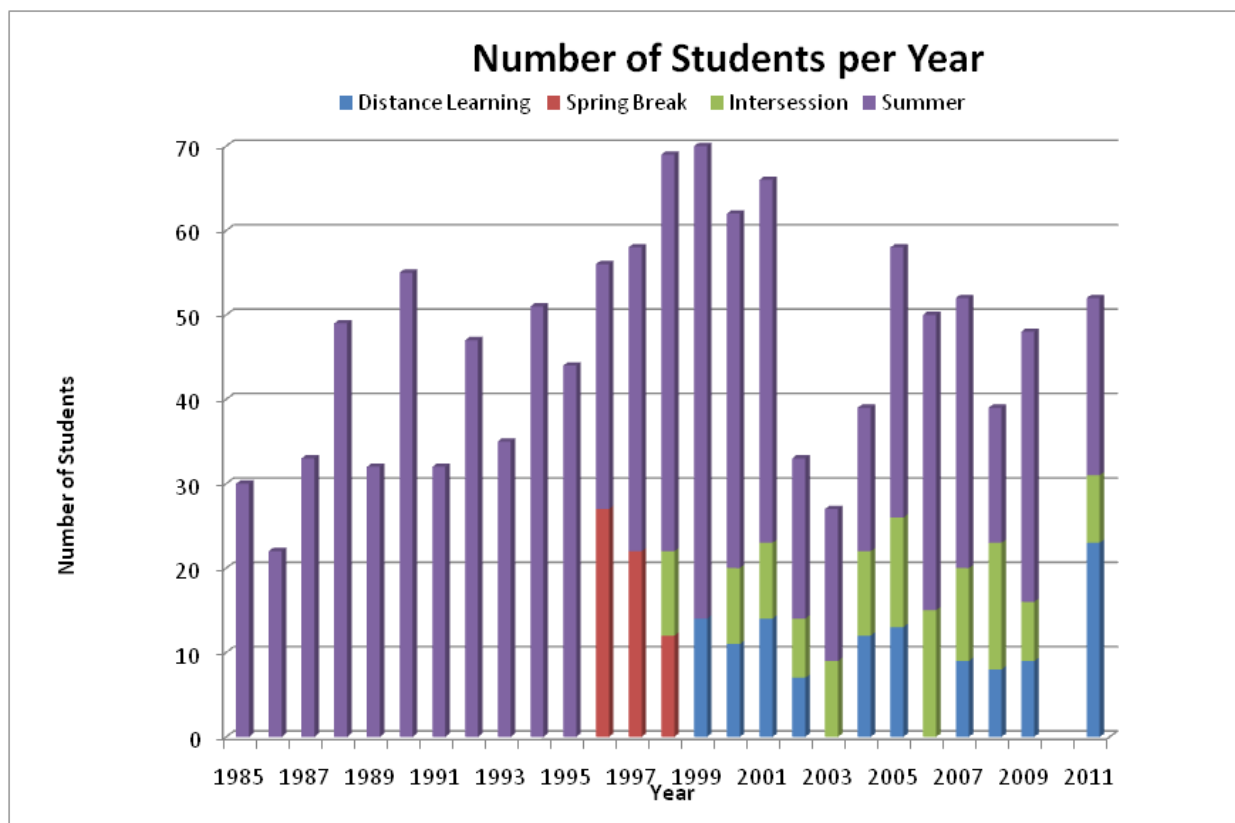


LUMCON BP GRI Award Breakdown				
Institution	Year 1	Year 2	Year 3	Total
Brigham Young University	66,780	42,585	48,969	158,334
Connecticut College	67,634	67,634	67,634	202,902
Florida Gulf Coast University	39,842	49,050	44,845	133,737
Louisiana State University and A&M College	1,028,438	1,022,901	1,003,698	3,055,037
Louisiana State University Ag Center	652,769	668,241	655,507	1,976,517
The Ecosystems Center, MBL	71,278	71,310	71,423	214,011
Rutgers University	127,046	150,851	135,460	413,357
University of Louisiana, Lafayette	158,089	289,231	193,329	640,649
University of Maryland	215,147	209,923	210,172	635,243
University of Tennessee	153,174	214,691	183,932	551,797
Virginia Institute of Marine Science	72,350	58,290	58,290	188,930
University of North Carolina	10,097	10,400	10,712	31,209
Total Subawards	2,662,644	2,855,107	2,683,971	8,201,723
Louisiana Universities Marine Consortium (includes Research, Program Mgt, E&O, Data Mgt, vessels, ICR, ICR on subawards)	1,382,160	1,284,375	1,316,743	3,983,277
TOTAL	4,044,804	4,139,482	4,000,714	12,185,000

Education Enterprise

University

LUMCON conducts courses for undergraduate and graduate students that accrue credits to the member universities. These include summer courses, spring semester long distance video courses, spring break courses, and intersession courses. Courses taught by LUMCON that accrue credits to the member universities carry a consistent course description and number of credits across all universities. While the number and titles of courses have changed over the years, there remains a consistent number of courses that are offered on an odd-and-even year basis. LUMCON offers a spring semester distance learning course “Changing Coastal Oceans” to several universities at a time. There is an intersession course entitled “Coastal Landscape Photography” that intersects art and natural history of coastal ecosystems. This course can be taken for credit or workshop hours. Spring break courses have been successful in the past with laboratory credit hours for invertebrate and vertebrate ecology, but are not currently offered. A Tulane University Neurophysiology course was taught during intersession 2011 in support of an NSF Early Career grant to Dr. Benjamin Hall. This will be repeated in 2012.

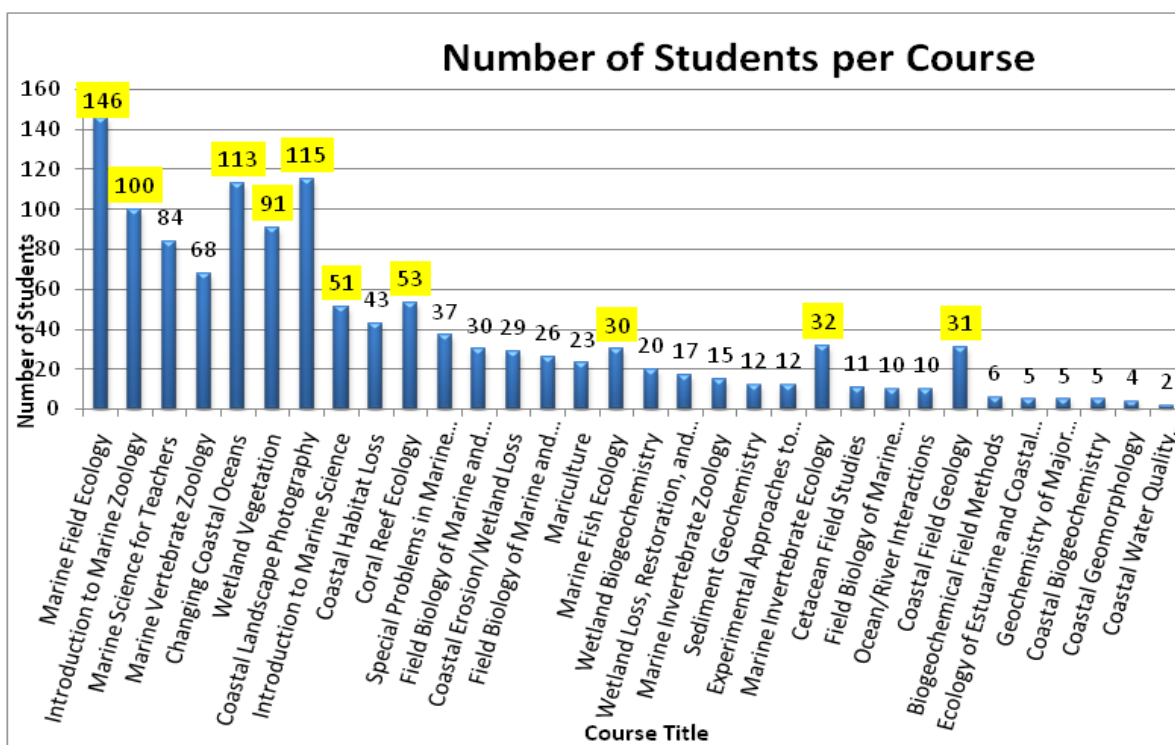


The number of students per year reflects several factors, the ability to recruit, the national budget scenario, the need for students to keep jobs or places of residence as opposed to participation in a field course, the requirements of the degree, disruption of the LUMCON facilities post hurricanes, leadership changes in the program, cooperation of the member institutions, canceling of summer school in FY10 due to budget cuts, and other unknown forces.

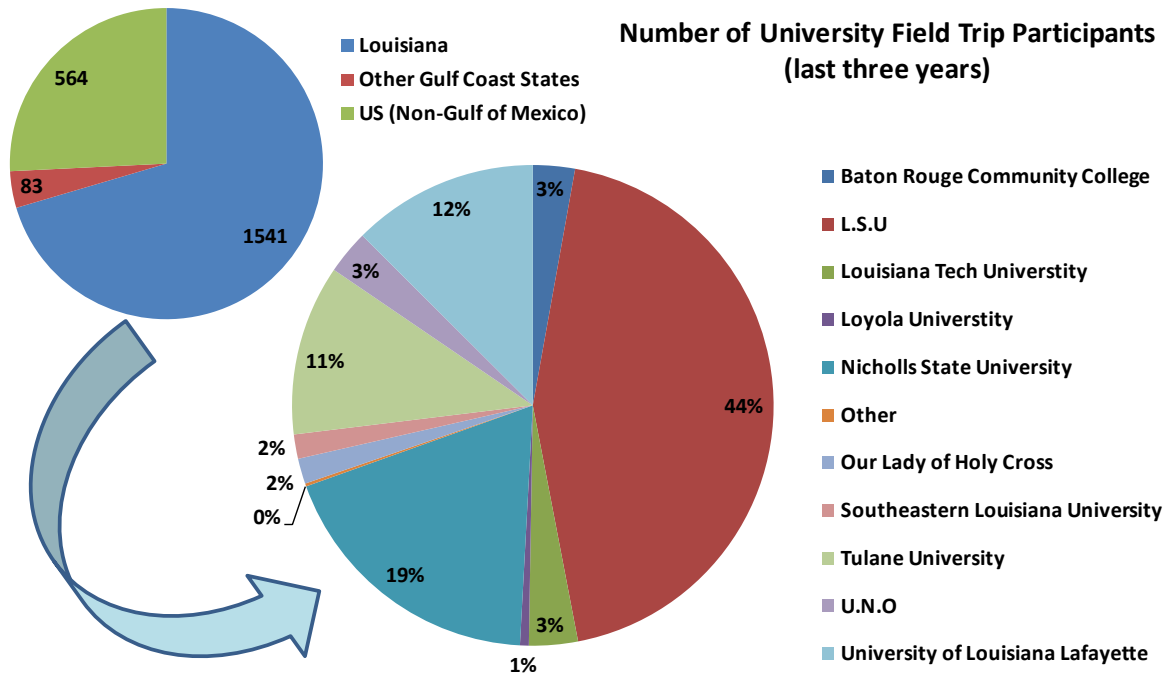
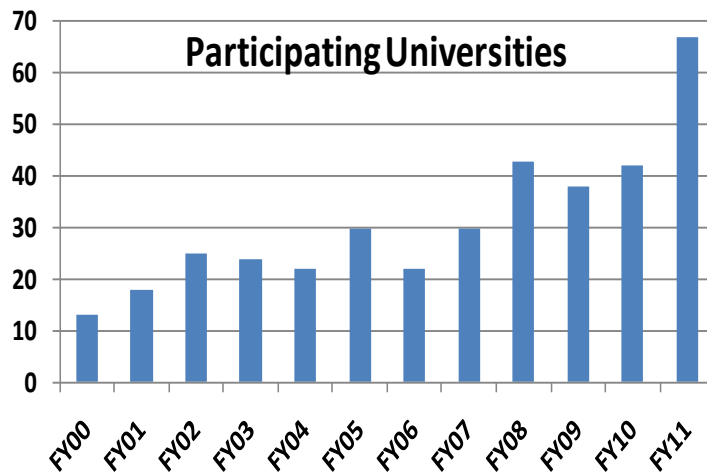
The LUMCON Foundation supports room and board scholarships for summer students to help offset the cost of attending.

The LUMCON university education program has evolved over the years since 1981 when the first courses were taught from our temporary trailers and the Fourchon and Fearman field camps. The courses and their popularity are indicated below. The numbers highlighted in yellow are those courses currently carried across multiple university curricula and on a consistent basis. Maintaining an active and enrolled university level education program requires constant and consistent attention.

A summer internship program supports undergraduate students who want to participate in a mentored-research relationship with LUMCON faculty. LUMCON has also offered library, vessel operations and information and technology summer internships. LUMCON just completed its first summer of an NSF-supported REU program (Research Experiences for Undergraduates). The program supported ten exceptional upper-level undergraduates for mentoring by six faculty members. From all accounts it was a successful program. The BP GRI research award will support two additional REU students in addition to NSF funds in summer 2012.



The University Education program also sponsors visiting universities on field trips, often conducts those field trips, and also supports public groups, such as Leadership Terrebonne. The number of field trips continues to be high. LUMCON can support more field trips now that the hurricane repairs from Katrina and Rita in 2005 were completed in the fall of 2010 (yes, five years!). The available facilities were not adequate in the intervening period.



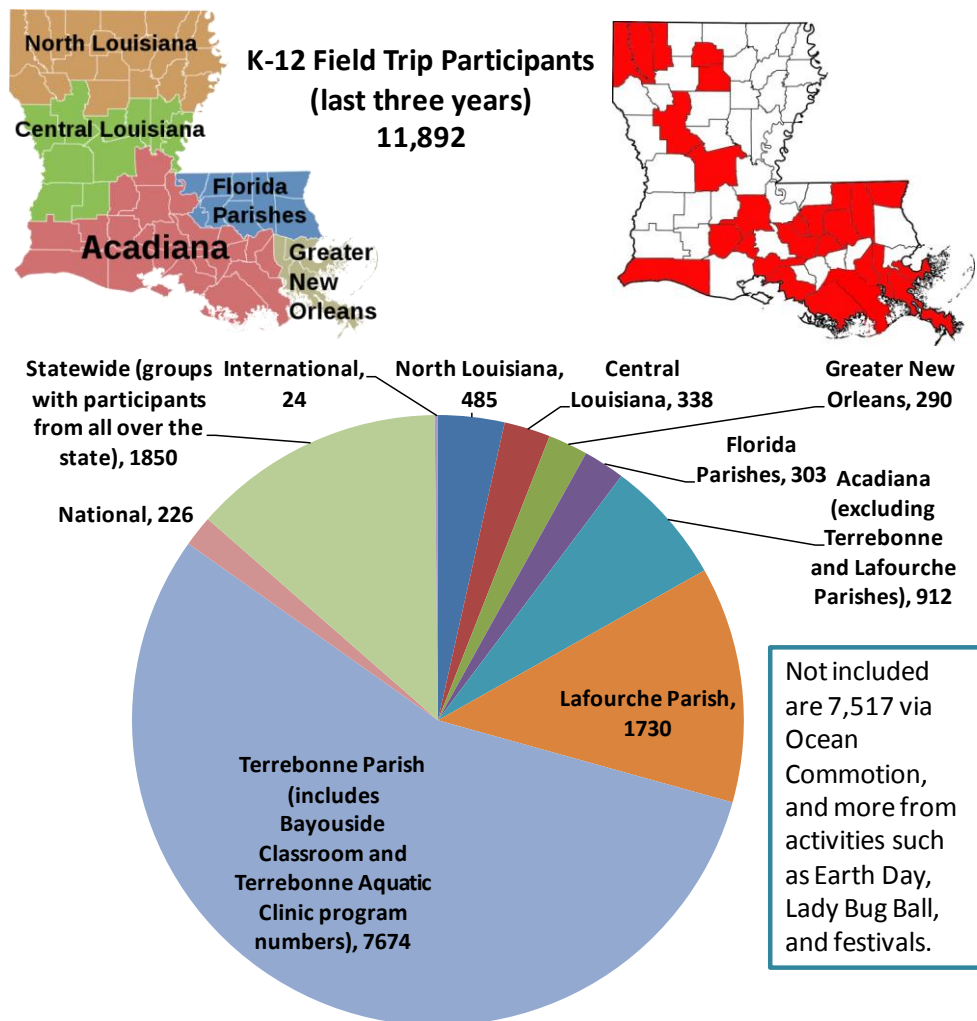
Popular adult education activities in recent years were the “Lagniappe” Saturday courses featuring topics of interest presented by faculty members and field and laboratory experiences provided by marine educators. The current adult education program is “Wetland Warriors,” an overnight learning and field activity. Both were funded by competitive awards from the Gulf of Mexico Alliance.

K-12 and Teacher

LUMCON has an active K-12 education program with on-site and off-site educational activities. A LUMCON signature program is Bayouside Classroom, which was designed by an

NSF Early Career Assistant Professor with the K-12 program. In this program students learn the scientific method, demonstrate it with water quality testing at the LUMCON Marine Center in Cocodrie, or the bayou near their school, enter their data into a program-wide data base, and continue to participate as a Bayouside Classroom after their training. The program was awarded an education activity citation from the National Science Foundation and is incorporated in the Terrebonne Parish, middle school advanced biology curriculum (see next page). The program and its variants have expanded across Louisiana and form the basis for needed environmental education in numerous underrepresented and underserved student classrooms. The K-12 program offers a variety of laboratory and field experiences that classes can participate on a half-day, full-day, or overnight trip and a summer camp experience “LUMCON Estuarine and Awareness Discovery” (LEAD).

The K-12 program was curtailed, as university education was, by the long time it took to complete hurricane repairs from Hurricanes Katrina and Rita in 2005. Alternative half-day and full-day programs were created, and more outreach performed. With dwindling state funds for public schools, more outreach programs are necessary.



Terrebonne Parish School District

201 Stadium Drive

Houma, LA 70361

985-872-1462 (v)

985-872-2507 (f)

LUMCON

8124 Highway 56

Chauvin, LA 70344

Dr. Nancy Rabalais:

I am pleased to be able to write this letter describing the partnership between the Terrebonne Parish School District and the Louisiana Universities Marine Consortium's Bayouside Classroom. For more than eleven years, LUMCON and the Terrebonne Parish School District have worked closely to provide honor students in seventh grade life science, eighth grade earth science, and high school biology classes the opportunity to work closely with scientists to collect water quality data from the water sources near their schools. Students in the bayouside classroom measure the water quality of the bayous near their school and enter that data on the bayouside website. This data is analyzed by students and compared to the data they collect during their annual field trip to LUMCON or to other schools participating in this project. As part of the bayouside classroom experience, each class visits the research facility to perform the same test as they conducted at their school and to listen to discussions provided by different research faculty.

This placed-based learning experience has impacted the understanding of the local environment to over 800 students each year. As a result of their participation in this program, more students are designing environmental-based science fair experiments, and their understanding of how to ask scientific questions has improved drastically. Since the inception of this program eleven years ago, two of our students who participated in the water quality project have placed at the International Science and Engineering Fair (ISEF). Prior to implementation of this program, only one student placed in the previous twenty years of competition. ISEF has over 1500 students from all fifty states and sixty five countries participating for 4 million dollars worth of scholarship and prize money. Our students have shown that they are able to effectively apply the scientific process in their science fair projects which has ultimately improved their performance on the many standardized tests they are required to take.

This unique partnership between LUMCON and the Terrebonne Parish School District has been shared at several National Science Teachers Association Conferences with educators throughout the country. The program has continued to impact the lives of our students in Terrebonne Parish, and I look forward to many more years of working with this very unique program.

Sincerely,

A handwritten signature in cursive script that reads "Paul Johnson". The signature is written in dark ink and is positioned above the printed name of the signatory.

Paul Johnson, Terrebonne Parish School District Science Curriculum Specialist

LUMCON hosts over 300 teachers per year in workshops held in collaboration with partners from BTNEP, Louisiana Sea Grant, Coastal Roots, Louisiana Department of Wildlife and Fisheries, and others.

Barataria-Terrebonne National Estuary Program

The BTNEP is one of several such programs of the U.S. Environmental Protection Agency (<http://www.btnep.org>). It is a partnership of government, business, scientists, conservation organizations, agricultural interests, and individuals for the *preservation, protection, and restoration* of the Barataria-Terrebonne National Estuary in southeast Louisiana. Its state co-funding partner was the Louisiana Department of Environmental Quality until 2002 when it was moved under the LUMCON umbrella, along with the state co-matching funds required required for an NEP. Mr. Kerry St. Pé is the director and oversees a staff of nine. With the failing state budget, the BTNEP has received a proportional cut equal to the overall LUMCON budget cut and is in peril of not being able to meet its one-to-one matching requirement.

The Barataria-Terrebonne estuarine complex encompasses the 4.2 million acres of wetlands, ridges, forests, farmlands, and communities between the Mississippi and Atchafalaya River Basins in southeast Louisiana. A diverse group of stakeholders--government, business, scientists, conservation organizations, agricultural interest, and individuals—form a Management Conference that ensures a place for the voice of all that live, work, and play in the Barataria-Terrebonne estuarine complex. The BTNEP has a strong education and public outreach program that generates many of the volunteer, student, teacher and citizen hours to the overall LUMCON LaPAS indicators.

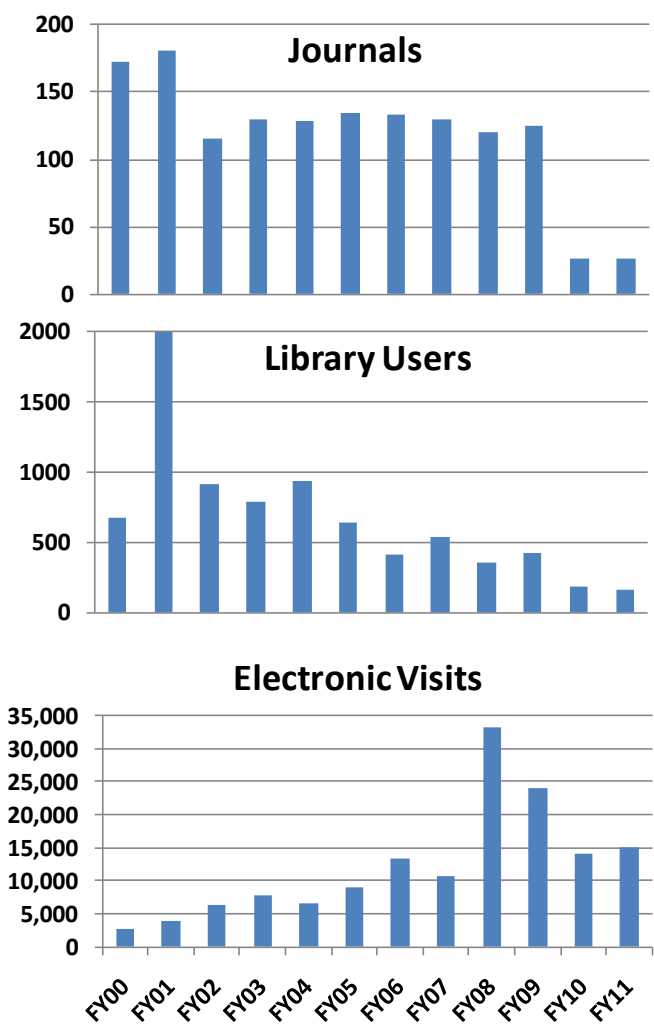
Support Components

Library

The LUMCON Library at one time could boast the most comprehensive collection of marine science journals in the state. This situation has changed as electronic access has opened the realm of scientific literature access. The number of individuals who walk through the door of a library now is reduced compared to the past as more and more access is sought electronically. Similar trends are obvious at the LUMCON Library.

Budget cuts to the state portion of the LUMCON budget have additionally curtailed the number of journal subscriptions. These are additionally supported by Indirect Cost Recovery funds. Originally cuts were made to those used less, then cuts were made to grouped subscriptions such as held by Springer and Elsevier. Current journal holdings are primarily in the American Geophysical Union holdings and others not accessible through a member institution of IAMS LIC (International Association of Aquatic and Marine Science Libraries and Information Centers). LUMCON maintains a budget sufficient to support LOUIS (the Louisiana Library Network), which provides access to multiple libraries across the state. The financial support for LOUIS, however, is dwindling as state budget cuts are passed along to the Board of Regents, and

the LUMCON share of this fee increases. Indirect Cost Recovery continues to be the main means of support for the LUMCON Library services (salaries are covered by the state budget).



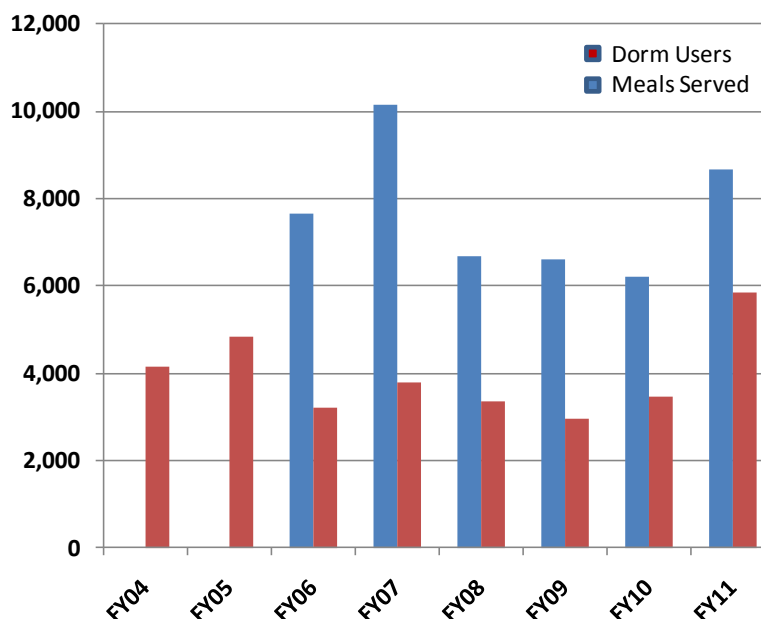
Cafeteria/Dormitories

LUMCON provides housing and meal services for visiting groups, such as K-12, teacher, and university activities, along with hosting numerous public groups and symposia. There are five apartments, a nine-person bunk room, two handicap rooms, and 16 dormitory rooms. The dormitories are also used for visiting faculty, graduate students, visiting researchers, and employees (as room allows). Several employees travel from long distances and chose to reside at the Marine Center several days a week. The current dormitory capacity is ~89 beds. This number was reduced to half that amount following Hurricanes Katrina and Rita in 2005. It took through October of 2010 before the final repairs were finished and approval was given for occupancy.

Along with the decreased dormitory capacity, the number of overnight visitors dropped substantially, and the number of meals served was reduced. The cafeteria/dormitory enterprise is an ancillary budget for LUMCON and must remain in the black. When expenses exceeded

revenues in FY10, our ability to maintain a full-time staff forced a layoff in workers. Several have returned on a part-time basis, and the balance at the end of FY11 was in the black.

[N.B. the LaPAS numbers for years prior to FY06 for meals served and prior to FY04 for dorm users are incomplete.]



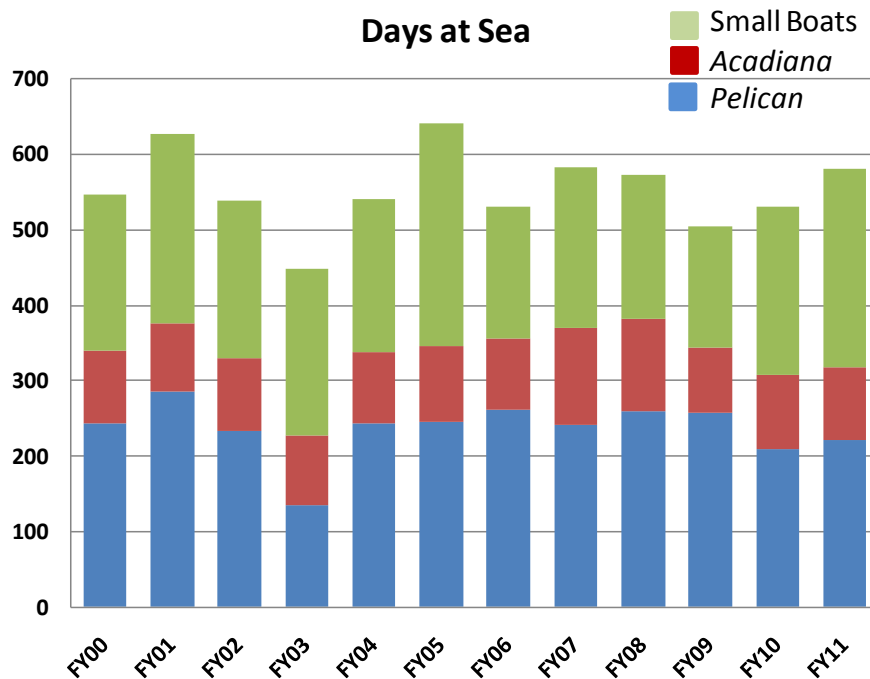
Vessels

LUMCON has a very successful vessel operations department. The success of the R/V *Pelican* as a highly respected member of the UNOLS fleet (University National-Oceanographic Laboratory System) has carried over into the operations of the smaller coastal research vessel, R/V *Acadiana*, and the small boat fleet.

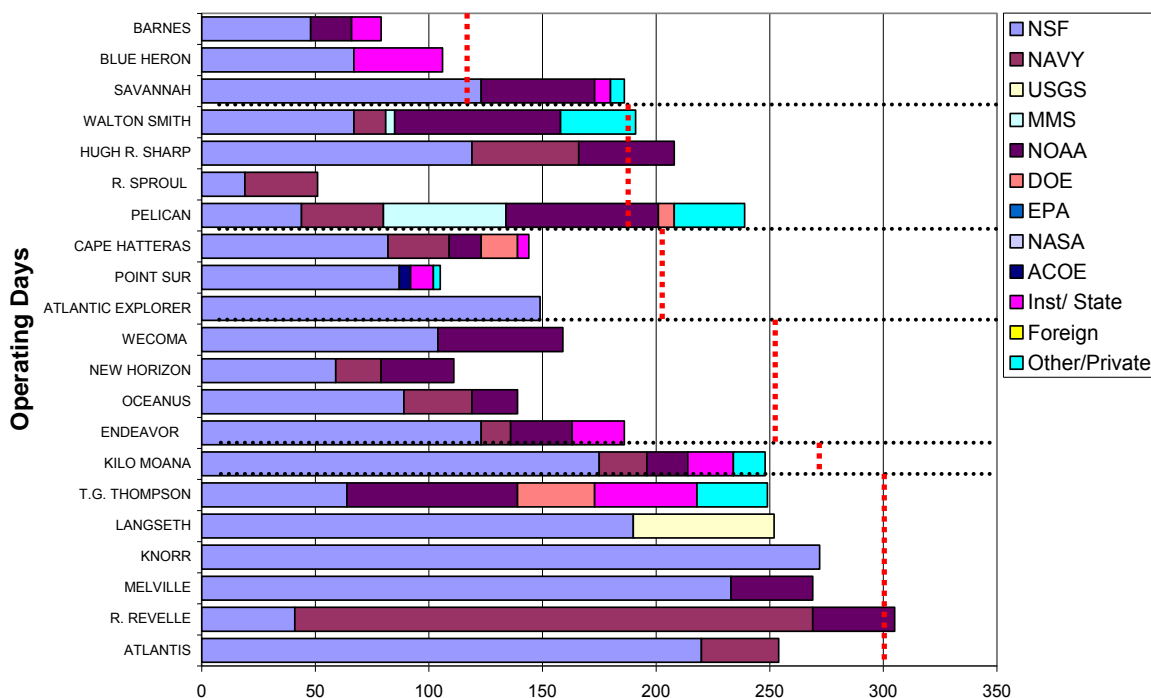
As the state support of LUMCON has decreased over the years, the vessel operations budget has increasingly covered its own costs and given back to LUMCON, primarily through support of vessel use for marine education. The low *Pelican* days in FY03 are due to the mid-life shipyard refit of the *Pelican* (covered by state Capital Outlay funds). During this period, Vessel Operations worked to put LUMCON-requested ship days onto other UNOLS vessels. The refit increased the length of the *Pelican* to 116 ft, primarily on the stern, but also a complete reworking of the insides of the ship from engine, A-frame, crane improvements to electrical circuits and living quarters. A shipyard visit in FY11 (funded by Vessel Operations as part of the maintenance fund kept for UNOLS and NSF equipment grants) improved substantially the aft-control station and other necessary upgrades to winch, crane, anchoring system, ADCP portals, and electrical and computing networks.

The R/V *Pelican* continues to be the busiest vessel in the University-National Oceanographic Laboratory System (UNOLS) fleet with over 100% utilization. The R/V *Pelican* completed the 2010 year with 237 days at sea. The vessel is on schedule to complete 231 chartered days during 33 cruises for 2011. The R/V *Pelican* has averaged 243 chartered days

over the past four years and will continue to operate as the workhorse of the UNOLS fleet. The R/V *Pelican* is the only UNOLS vessel stationed and operating full time in the Gulf of Mexico. While the *Pelican* has a diversified user community, its NSF-funded days are low compared to other NSF-owned research vessels. This is primarily because the *Pelican* transfers many of its NSF-funded days to other vessels in the fleet.



2011 Scheduled UNOLS Ship Days (as of Sept 2010)



Mr. Joe Malbrough and Dr. Nancy Rabalais are active participants in the UNOLS community, with positions as Chair of the Research Vessel Operators Committee and member of the Council of UNOLS, respectively.

LUMCON's *Acadiana* serves mostly marine education but its research cruises have increased over the years. Research cruises have precedence over marine education cruises. Marine education days on the *Acadiana* may be substituted by use of multiple small boats. As at most marine laboratories, small boats are the endless pit into which money is poured. The overall Vessel Operations has managed to keep this portion of the vessels afloat. As Vessel Operations assumes more of the overall operations funding of all vessels, LUMCON (although not separate from Vessel Operations) needs to find ways to supplement education use of the vessels.

The ability of the LUMCON ancillary programs to support basic LUMCON operations is outlined in the following document.

LUMCON LAGNIAPPE

(prepared for FY2011 budget deliberations for Senate Finance Committee)

The Louisiana Universities Marine Consortium for Research and Education brings much to the State's marine science enterprise and state and local economies. The FY11 budget from the State General Fund is \$2,702,185 + \$38,753 statutory dedication = \$2,740,938. With the mid-year budget cut the FY11 budget will be cut by \$246,525. While this may seem small in the overall Higher Education budget, it is a critical amount for LUMCON. The base of operations is being eroded so that important contributions by LUMCON are becoming limited. LUMCON cannot raise tuition or fees, and did not receive ARRA Stimulus Funds. Yet, LUMCON is being cut according to the university formula.

At present there are 31 LUMCON employees supported by State General Funds.
 49 others are from grants, self-generated revenues, and fees
 = 80 employees

Currently there is a \$2 dollar return for every \$1 dollar of State General Fund support.

On the base of State General Fund support in FY10, LUMCON through grants and fees additionally:

Generated \$2,563,244 in external research grants =	34 employees (3 from ICR) 3 mo salary support for 6 faculty members \$2,400,000 in research-related expenditures \$436,048 in indirect cost recovery
---	---

Generated \$2,243,923 in vessel operations fees =	11 employees \$147,835 ICR for maintenance fund
---	--

Facility use (cafeteria/dormitories) fees =	\$78,714 3 employees
---	-------------------------

Vessel Operations education support =	\$45,716 for field trips and student research
[Benefitting Loyola, Nicholls (4), LSU (3), UNO, Dillard, ULL (2), LA Tech, Southern, Baton Rouge Community College, Our Lady of Holy Cross College (2), Texas A&M Univ, Dickinson College PA, Univ Scranton PA, Williams College CT, Towson Univ MD, Duke Univ NC, Penn State PA]	

ICR supported Marine and University Education	\$78,907 (with \$173,076 from State)
---	--------------------------------------

ICR supported the Dive Safety Officer	\$6,449
---------------------------------------	---------

[Benefitted LUMCON, ULL, LSU in FY10]

ICR supported Public Information	\$32,032
----------------------------------	----------

TOTAL	\$117,388
--------------	------------------

This equates to **48** employees in the Terrebonne/Lafourche Parish areas, and additionally **\$1,266,160** in goods and services.

LUMCON and its affiliated BTNEP in FY10 hosted:
 5,936 K-12 school children

57,196	contact hours with the K-12, adult and public education
15	graduate students
30	registered university students (despite no summer school)
12,207	university student contact hours (despite no summer school)
19	university courses (credits and tuition to member universities)
133	university credits (despite no summer school)
42	participating universities
85	workshops for public interest groups
4637	students on field trips
327	teachers in workshops
210	days on Pelican,
98	days on Acadiana, and
223	days on small boats

PARTICIPATING UNIVERSITIES in courses, credit hours, field trips, directed research:

McNeese, Nicholls, Northwestern, Tulane, Louisiana Tech, Loyola, UNO, Nicholls, Southeastern Louisiana U, Baton Rouge Community College, SUNO, Our Lady of Holy Cross College, Duke, Dauphin Island Sea Lab, Florida State U, U Puerto Rico, Boston U, U Minnesota, North Carolina State U, U Southern Mississippi, Texas A&M U Galveston, Gustavus Adolphus MN, U Minnesota, Woods Hole Oceanographic Institution, Cabrillo College, Mystic Seaport Boston U

OIL SPILL RESPONSE

325 dormitory beds from June – August, 2010

[Representing ENTRIX (Environmental and Natural Resource Management Consulting Firm, Louisiana Dept of Wildlife and Fisheries, Cornell Lab of Ornithology, ABC News, U.S. Environmental Protection Agency, *Nature* magazine, Biodiversity Research Institute, Virginia Tech, Cactus Clyde Productions (a.k.a. CC Lockwood)]

Multiple Requests for assistance from

[U.S. Environmental Protection Agency, Diversified Services, use of Fourchon camp for sample processing center; Louisiana Oil Spill Coordinators Office, helicopter landing; Terrebonne Parish Sheriff Water Patrol, small boat launching and staging; Louisiana Dept of Wildlife and Fisheries, small boat launching and staging; BP Cocodrie Operations Center]

[Continued use for helicopter landings, Office of the Governor, state and federal agencies, Homeland Security, U.S. Coast Guard, LA State Police, U.S. Fish and Wildlife Service, LA Dept of Wildlife and Fisheries, Acadian Ambulance Service]

[Continued use for boats from Terrebonne Parish Water Patrol, U.S. Fish and Wildlife Service, LA Dept of Wildlife and Fisheries, BP related research projects]

Environmental baseline data for:

Terrebonne Bay and integrated offshore hypoxia transect
Barataria Bay
Lake Pontchartrain
Atchafalaya River delta estuary and integrated offshore hypoxia transect
Offshore coastal waters

Louisiana wetlands

Environmental Monitoring System

[Continuous, long-term data from five sites in coastal Louisiana, feed to National Weather Service, visits from Dept of Natural Resources, and many public and private entities]

Expenditures in FY2010 for:		Non State	
			General
Marine Education Budget			Funds
Salary	\$63,500		\$8,940
Fringe	\$19,050		\$13,093
Travel	\$1,000		\$1,000
Op Svcs	\$2,000		\$2,000
Supplies	\$9,000		\$9,000
Total	<u>\$94,550</u>		<u>\$34,033</u>
University Ed Budget			
Salary	\$45,020		\$20,705
Fringe	\$13,506		\$7,120
Travel	\$1,000		\$1,000
Op Svcs	\$8,000		\$8,000
Supplies	\$1,000		\$1,000
Contractual	\$10,000		\$7,049
Total	<u>\$78,526</u>		<u>\$44,874</u>
Public Information Budget			
Salary			\$17,840
Fringe			\$6,192
Travel			\$2,000
Op Svcs			\$1,000
Supplies			\$5,000
Total			<u>\$32,032</u>
Dive Safety Officer (only one in state)			
Salary			\$1,708
Fringe			\$554
Travel			\$3,000
Op Svcs			\$1,142
Supplies			\$45
Total			<u>\$6,449</u>
TOTAL	\$173,076		\$117,388
	State		
	General		LUMCON

LUMCON Vessel Operations Support of Educational Use						
		FY10		Jul-Dec		
				FY11		
Acadiana						
LUMCON		\$2,692		\$600		
K-12		\$13,486		\$600		
University		\$12,627		\$12,100		
		<u>\$28,805</u>		<u>\$13,300</u>		
Loyola, Nicholls (2), LSU (2), SLU, Tulane, Dillard, Ull, Baton Rouge Community College, Our Lady of Holy Cross College						
Texas A&M Univ., Dickinson College PA, Univ. Scranton PA, Williams College CT						
Small Boats						
LUMCON		\$6,756		\$0		
K-12		\$3,227		\$1,318		
Adult Education		\$1,933		\$0		
University		\$4,995		\$2,457		
		<u>\$16,911</u>		<u>\$3,775</u>		
UNO, Nicholls (2), La Tech, LSU, Southern, Our Lady of Holy Cross College						
Towson Univ. MD, Duke Univ. NC, Penn State, PA						
Total		<u>\$45,716</u>		<u>\$17,075</u>		

FACILITIES

LUMCON's **W. J. DeFelice Marine Center** is located in Cocodrie, approximately 85 miles southwest of New Orleans. The Center's location on the upper end of Terrebonne Bay and its proximity to the Mississippi River and Atchafalaya River deltas, extensive estuaries, and coastal wetlands, makes it an ideal venue for the study of coastal Louisiana. The Marine Center includes two buildings: one large main building and a smaller building for maintenance, vessel operations, mechanical equipment and vehicles. The large building is a 75,000 sq ft complex built to accommodate the research and educational programs of LUMCON. The Marine Center contains laboratories (some with running seawater), classrooms, a computer network, an extensive marine science library, and housing to meet the needs of researchers, educators and students. The Center includes 26,000 net usable square feet of laboratory, environmental chambers, a multi-user wet lab, a fisheries lab, state-of-the art analytical equipment, a unique raceway seawater track, classroom, office, and library space. Laboratories are used for both research and teaching—eight are equipped with running sea water, either ambient or high salinity offshore water, and six are reserved for dry applications, instrumentation and microscopy.

The water that surrounds the Marine Center is not as salty as the water from the open Gulf of Mexico. The bayou water is suitable for local marsh animals, but saltier water is needed for many of the Center's tanks and aquariums. The Gulf of Mexico water is brought by the *R/V Pelican* from offshore areas where there is a minimal sediment load and the salinity is 35 (full salt content). The water is transferred to holding tanks located under the research area. Every day the water is circulated through ultraviolet light and sand filters to kill germs, parasites and remove large particles. Local bayou water or offshore seawater is piped to the teaching and research laboratories in the 'wet' wing for the culture and maintenance of marine organisms. A large wet lab houses the racetrack flume, several large tanks and culture facilities for algae, brine shrimp and rotifers that are used for larval fish food

The offices are located on the exterior side of the hallways and the laboratories on the interior side. This design feature keeps the research scientist's offices close to their laboratories, but also minimizes damage to any laboratory equipment in the event that windows are broken during a storm.

A video distance-learning center provides for lectures and televised laboratory procedures between LUMCON and other sites. Dormitories, apartments, meeting rooms and cafeteria are available for use by students, visiting investigators, classes, field trips, instructors and citizen groups. Visitor highlights include LUMCON's 65-foot tall observation tower, aquaria, educational displays and outdoor boardwalks. LUMCON also maintains a field laboratory at Port Fourchon, located west of Grand Isle, Louisiana.

The LUMCON Library is home to Louisiana's most comprehensive collection of up-to-date marine science journals. The Library holds issues of about 250 journals. It also has a collection of 4000 monographs and 3500 government documents. The number of hard-copy journals has diminished over the years as a result of budget cuts, but the library maintains an electronic library, which allows patrons to get articles from most scientific journals. The library offers support to local school students needing help with research or projects.

Dormitory rooms and five apartments provide housing for up to 80 persons and are available for use by students, visiting investigators, and instructors. A cafeteria/ general meeting room is situated in the center of the complex, linking the housing and research/instructional spaces. A 99-seat auditorium facilitates teaching activities, presentation of seminars, and the convening of conferences.

LUMCON operates a field laboratory near Port Fourchon, between Golden Meadow and Grand Isle. Dormitories, cafeteria, laboratory and field equipment are available for use of visiting researchers, university field trips and marine education programs.

LUMCON owns and operates the 115-ft *R/V Pelican*, a UNOLS vessel. Shipboard equipment on the *R/V Pelican* includes three hull-mounted ADCPs, a SeaBird CTD/DO/rosette system with *in vivo* fluorescence, % transmission, PAR and optical backscatter, and a flow-through system with temperature, salinity, % transmission, and *in vivo* fluorescence integrated with weather and GPS navigation information. The *Pelican* sleeps 12 scientists and 8 crew for extended trips of several months, from the Gulf of Maine to Venezuela. Most of the research conducted on the *Pelican* is conducted in the Gulf of Mexico.

The *R/V Acadiana* is a 57-ft coastal research vessel that operates between Alabama and Texas, including the estuaries and inner continental shelf of Louisiana. The *Acadiana* sleeps 4 scientists and 2 crew for extended trips of 2-3 weeks. It is equipped with a SeaBird CTD and water collection device, and there are plans to develop a GPS-coordinated flow through system. A fleet of small boats, including an offshore 27-ft aluminum hull, several smaller boats, an airboat and a pontoon boat, are available for use from the LUMCON Marine Center in Cocodrie, or they can be trailered for use at other locations. There are 12 canoes available for classes.

LUMCON's Environmental Monitoring System collects and provides real-time and long-term environmental data to a broad community of scientists, educators and the public. Stations at the Marine Center, local bays and estuaries, Mississippi River and offshore transmit wind speed and direction, precipitation, water height, air and water temperature, salinity, oxygen, nutrients, and other data to the Marine Center. Current information can be accessed via weather.lumcon.edu, and current weather conditions at the Marine Center can be viewed online via two cameras located in the observation tower. The Environmental Monitoring Program has four real-time meteorological and water quality stations across coastal Louisiana from Terrebonne Bay to the Mississippi River. Funding for this effort was through a Board of Regents enhancement to the LUMCON budget in support of a competitive EPA EPSCoR proposal. Cuts in the state budget have minimized these stations so that Tambour Bay and Southwest Pass are no longer supported, but data are archived. Data serve the National Weather Service and the National Coastal Data Development Center. The long-term goal is to place observing platforms in Atchafalaya Bay, Barataria Bay and more centrally in Lake Pontchartrain. The two competitively competed subawards were to support a sediment resuspension and transport project in the northwestern Lake Pontchartrain and offshore hypoxia work. The Lake Pontchartrain research has long been abandoned but the site is still useful. The offshore hypoxia work continues. The details can be seen at <http://weather.lumcon.edu> for the LUMCON stations and at <http://wavcis.csi.lsu.edu>.

The LUMCON computer, printing, server, and communications systems are networked throughout the Marine Center by both hard wire and wireless. The R/V *Pelican* is serviced by HighSeasNet and is testing a new system. There are numerous desktop PC computers available among the faculty and within the LUMCON Marine Center, along with several servers for Internet and real-time download of monitoring data. A shared-use graphics room has scanner, large format printer, slide maker, and video, DVD copying, conversion capabilities. LUMCON is linked with a two T-1 lines, and the Marine Center is networked for servers, individual computers, shared computers, and a complex of shared printers (both B&W, color, and large format). LUMCON email is handled through Google to avoid disruption during hurricanes.

LUMCON has been successful over the years in competitions by the Louisiana Board of Regents Support Fund and various NSF programs to continue to acquire state-of-the art facilities and equipment for LUMCON researchers and their collaborators.

	NAME	TITLE
	ALEXANDER AMEEN	RESEARCH ASSISTANT
BTNEP	ANDREW BARRON	WATER QUALITY COORDINATOR
	BRUCE BENOIT	INFORMATION TECHNOLOGY SPECIALIST
BTNEP	MATTHEW BENOIT	PLANT MATERIALS COORDINATOR
	TAD BERKEY	ABLE-BODIED SEAMAN R/V PELICAN
BTNEP	DEAN BLANCHARD	HABITAT ENHANCEMENT COORDINATOR
	SHANNA BONVILLAIN	ASSISTANT LIBRARIAN
	HEIDI BOUDREAUX	FINANCE MANAGER/HUMAN RESOURCE MANAGER
	IVY BOUDREAUX	FACILITY TECHNICIAN/SECURITY
	EDWARD CHESNEY Jr	ASSOCIATE PROFESSOR
	JENNIFER CONOVER	MARINE EDUCATION ASSOCIATE/AQUARIST
	JOHN CONOVER	LIBRARIAN
	NICOLE COTTEN	UNIVERSITY EDUCATION COORDINATOR & INSTRUCTOR
	MICHAEL DAGG	PROFESSOR
	DINAH DAIGLE	CAFETERIA/DORMITORIES
	WILTON DELAUNE	FACILITY TECHNICIAN
BTNEP	RICHARD DEMAY	SENIOR SCIENTIST
	KENNETH DIES	CAPTAIN R/V ACADIANA
	QUAY DORTCH	ADJUNCT PROFESSOR
	GWENDOLYN DUPLANTIS	CAFETERIA/DORMITORIES
	REID ENDSLEY	FACILITY TECHNICIAN
	AMANDA FONTENOT	STUDENT WORKER
	MELISSA GENAZZIO	RESEARCH ASSISTANT I
	DANIEL GUIDRY	ADMINISTRATIVE ASSISTANT, VESSEL OPERATIONS
	HOLLY HEBERT	PUBLIC INFORMATION SPECIALIST
BTNEP	SANDRA HELMUTH	OFFICE MANAGER
	KAREN JOHNSON	CAFETERIA/DORMITORIES
	STEVEN JOLTKI	COOK R/V PELICAN
	ALEXANDER KOLKER	ASSISTANT PROFESSOR
	JENN LASSEIGNE	GRADUATE RESEARCH ASSISTANT
	CRAIG LEBOEUF	CAPTAIN R/V PELICAN
	SAMUEL LEBOEUF	VESSEL TECHNICIAN R/V PELICAN
	KENNETH LECOMPTE	SECURITY GUARD
	CHARO LUKE	ACCOUNTS PAYABLE/ PURCHASING/GRANTS/CONTRACTS
	JOSEPH MALBROUGH	MARINE SUPERINTENDENT
	RUSSELL MARTIN	FACILITY TECHNICIAN
BTNEP	MICHAEL MASSIMI	INVASIVE SPECIAES COORDINATOR
BTNEP	MEREDITH MCKOIN	STUDENT WORKER
	JEREMY MILLER	RESEARCH ASSISTANT
	WENDY MORRISON	SENIOR RESEARCH ASSOCIATE
	JACK PENNINGTON	CHIEF ENGINEER/OPERATIONS MANAGER - R/V PELICAN
	GENE PONTIFF	SECURITY GUARD
	SCOTT PORTER	RESEARCH ASSOCIATE I
	SHIRLEY PRICE	CAFETERIA/DORMITORIES
	LORA PRIDE	RESEARCH ASSOCIATE III

	SAMANTHA PRIMER	RESEARCH ASSISTANT
	JEAN RABALAIS	RESEARCH ASSISTANT
	NANCY RABALAIS	EXECUTIVE DIRECTOR & PROFESSOR
	CYNDHIA RAMATCHANDIRANE	STUDENT WORKER/RESEARCH ASSISTANT
	RODNEY REDMAN	DECKHAND R/V PELICAN
	ALICE RICHOUX	CAFETERIA/DORMITORIES
	BRIAN ROBERTS	ASSISTANT PROFESSOR
	RICHARD ROBICHAUX	FACILITY TECHNICIAN
BTNEP	ALMA ROBICHAUX WAGNER	EDUCATION COORDINATOR
	JENNIFER ROBINSON	MARINE EDUCATION ASSISTANT
	STEPHEN RODRIGUEZ	RELIEF CAPTAIN
	PAUL SAMMARCO	PROFESSOR
	CARRIE SEMMLER	RESEARCH ASSISTANT
	CARL SEVIN	VESSEL TECHNICIAN
	CINDY SEVIN	RECEPTIONIST
	WAYNE SIMONEAUX	MARINE CENTER SUPERINTENDENT
	GEOFFREY SINCLAIR	ASSISTANT PROFESSOR
BTNEP	SHELLEY SPARKS	MEDIA RELATIONS COORDINATOR
	EMILY SPEIR	RESEARCH ASSISTANT
	JUSTIN STELLY	STUDENT WORKER
	KELLY STOERMAN	COOK R/V PELICAN
BTNEP	KERRY ST-PE	BTNEP PROGRAM DIRECTOR
	JOSEPH THOMAS Jr	2ND CAPTAIN R/V PELICAN
	GERALD WALKER	FACILITY TECHNICIAN
	THOMAS WIDGEON	MARINE TECHNICIAN R/V PELICAN
	MAX WIKE	RELIEF CAPTAIN/ROV OPERATOR - R/V PELICAN
BTNEP	KELLY WILLIAMS	STUDENT WORKER

BTNEP - Barataria-Terrebonne National Estuary Program

LUMCON'S CURRENT FY 2010-2011 BUDGET STATUS AS OF 6/30/2011

EXPENDITURES	FY 2010-11 BUDGET	FY 2010-11 ACTUAL EXPENDITURES THRU 6/30/2011	FY 2010-11 BUDGET BALANCE 6/30/2011
STATE FUNDS			
Salaries and Wages	1,363,777	1,363,777	0
Student Wages	0	0	0
Fringe Benefits	429,484	429,484	0
Travel	0	0	0
Operating Services	212,921	212,921	0
Supplies	65,109	65,109	0
Professional Services	0	0	0
Acquisitions:			
Library	20,651	24,943	-4,292
Other Acquisitions	17,933	13,641	4,292
IAT-UPS- TRANSFERS, OTM Charges	384,538	384,538	0
STATE FUNDS EXPENDITURES*	2,494,413	2,494,413	0

*With Statutory Dedication Funds

OTHER FUNDS			
Barataria-Terrebonne National Estuary	900,000	852,736	47,264
Restricted Fund (Research,IDC,FEMA)	2,854,667	2,739,879	114,788
Vessel Operations	2,250,000	2,242,825	7,175
Cafeteria / Dormitory	130,000	103,980	26,020
TOTAL EXPENDITURES	\$8,629,080	\$8,433,833	\$195,247

SOURCE OF REVENUE:	FY11 BUDGET	FUNDS DRAWN OR COLLECTED	FY11 BUDGET BALANCE
State General Fund	2,455,660	2,455,660	0
Restricted Fund: (Research,IDC,FEMA)			
Federal Funds	2,934,667	2,958,964	-24,297
Self Generated Fees	145,000	145,000	0
Interagency Trans.	675,000	488,807	186,193
Ancillary Funds:			
Vessel Operations	2,250,000	2,242,825	7,175
Cafeteria Dormitory	130,000	103,980	26,020
Statutory Dedications:Fac.Pay	38,753	38,597	156
Statutory Dedications:Hier Ed Init	0	0	0
TOTAL REVENUE	\$8,629,080	\$8,433,833	\$195,247

Prior Year-End Fund Balances:

Restricted Fund: (Research)	
Federal/Self-Gen. Fees, IAT,IDC Funds	993,421
Ancillary Funds:	
Vessel Operations w/IDC	90,386
Cafeteria / Dormitory	81,222
Act 971 Carryover (Prev. Maint.)	0
	1,165,029

LOUISIANA UNIVERSITIES MARINE CONSORTIUM

LUMCON

19-8674 FY 10-11

MONTHLY REPORT OF OPERATIONS

STATE GENERAL FUNDS, SELF FUND,

\$2,179,845

\$38,753

(\$137,694)

\$2,080,904.00

PERIOD IS JULY 1, 2010 to JUNE 30, 2011

		PAYROLLS MONTHS	20/27 9/12	USED 74.0% 75.0%	MINIMUM 26.0% 25.0%	FAVORABLE BAL FAVORABLE BAL	
EXP. CODE	SALARIES DESCRIPTION	MARCH MONTH	YTD, 2011	FY10-11 BUDGET	BALANCE	% BALANCE	
2130	SALARIES REGULAR	68,622.51	812,154.73	1,084,634.00	272,479.27	25.1218%	
2150	TERMINATION	0.00	0.00	0.00	0.00	#DIV/0!	
	OTHER COMPENSATION						
2200	WAGES						
2210	STUDENT LABOR			0			
	RELATED BENEFITS						
	RETIREMENT	0.00	-1,045.96	0.00	1,045.96		
2300	RETIREMENT-STATE	1,401.67	21,818.09	20,000.00	-1,818.09	-9.0905%	
2320	RETIREMENT-TEACHERS	11,688.90	131,698.18	170,000.00	38,301.82	22.5305%	
2350	F.I.C.A TAX	128.85	1,399.57	1,000.00	-399.57	-39.9570%	
2360	MEDICARE TAXES	723.72	7,142.41	13,000.00	5,857.59	45.0584%	
2380	GROUP INSURANCE	7,106.55	84,871.09	141,741.00	56,869.91	40.1224%	
2370	UNEMPLOYMENT BENEFITS	0.00	0.00	0.00	0.00	0.0000%	
	FRINGE TOTAL	21,049.69	245,883.38	345,741.00	99,857.62	28.8822%	
	TOTAL SALARIES	89,672.20	1,058,038.11	1,430,375.00	372,336.89	26.0307%	
	TRAVEL						
	IN-STATE						
2500	ADMINISTRATION	0.00	0.00	0.00	0.00	#DIV/0!	
2510	CONFERENCES/CONVEN.	0.00	0.00	0.00	0.00	#DIV/0!	
2520	FIELD TRAVEL	0.00	0.00	0.00	0.00	#DIV/0!	
2530	BOARD MEMBERS	0.00	0.00		0.00		
	OUT-OF-STATE				0.00		
2600	ADMINISTRATION	0.00	0.00	0.00	0.00	#DIV/0!	
2610	CONFERENCES/CONVEN.	0.00	0.00	0.00	0.00	#DIV/0!	
2620	FIELD TRAVEL	0.00	0.00	0.00	0.00	#DIV/0!	
2630	BOARD MEMBERS				0.00		
	TOTAL TRAVEL	0.00	0.00	0.00	0.00	#DIV/0!	
	OPERATING SERVICES						
2700	ADVERTISING	0.00	0.00	0.00	0.00	#DIV/0!	
2710	PRINTING	0.00	0.00	0.00	0.00	#DIV/0!	
2720	AUTOMOTIVE INSURANCE	0.00	0.00	0.00	0.00	#DIV/0!	
2730	WORKER'S COMPENSATION	0.00	0.00	0.00	0.00	#DIV/0!	
2740	FIRE/EXTENDED COVER.	0.00	0.00	0.00	0.00	#DIV/0!	
2760	OTHER INSURANCE/MARINE	0.00	0.00	0.00	0.00	#DIV/0!	
	MAINTENANCE OF PROP.						
2770	AUTOMOTIVE REPAIRS	37.82	4,632.10	3,000.00	-1,632.10	-54.4033%	
2780	OTHER MAINTENANCE	0.00	0.00	6,000.00	6,000.00		
2790	BUILDING MAINTENANCE (INSRNCI	0.00	-76,466.00	0.00	76,466.00	#DIV/0!	
2800	EQUIPMENT MAINTENANCE	4,237.19	33,691.20	10,000.00	-23,691.20	#####	
2820	EQUIP MAIN, DATA PROC EQUIP	0.00	0.00	0	0.00		
2840	EQUIPMENT RENTALS	580.60	2,922.80	3,000.00	77.20	2.5733%	
2870	OTHER RENTALS	1,173.41	2,327.68	2,000.00	-327.68	-16.3840%	
2880	INTERNET PROCESSING	1,263.27	10,386.21	0.00	-10,386.21	#DIV/0!	
2875	DATA PROCESSING	0.00	0.00	0.00	0.00	#DIV/0!	
2890	DUES & SUBSCRIPTIONS	0.00	3,735.00	2,000.00	-1,735.00	-86.7500%	
2900	POSTAGE	52.84	973.05	2,500.00	1,526.95	61.0780%	
2910	TELEPHONE SERVICES	459.08	2,570.62	0.00	-2,570.62	#DIV/0!	
2920+2930	OTHER COMMUNICATIONS	0.00	0.00	0.00	0.00	#DIV/0!	
2940	UTILITIES-GAS	3,885.38	8,219.89	20,000.00	11,780.11	58.9006%	
2950	UTILITIES-ELECTRICITY	8,679.98	116,685.19	130,000.00	13,314.81	10.2422%	
2960	UTILITIES-WATER	396.37	7,592.18	10,000.00	2,407.82	24.0782%	
2970	UTILITIES-OTHER	0.00	0.00	0.00	0.00	#DIV/0!	
	OTHER OPERATING SERVICES						
2980	FREIGHT	0.00	-17.48	0.00	17.48	#DIV/0!	
2990	LABORATORY FEES						
3000	MISCELLANEOUS	2,993.27	21,589.97	9,154.00	-12,435.97	#####	
	TOTAL OPERATING SERVICES	23,759.21	138,842.41	197,654.00	58,811.59	29.7548%	

EXP. CODE	LINE ITEM	MONTH	YTD, 2011	BUDGET	BALANCES	% BAL
	SUPPLIES			0		
3100	OFFICE SUPPLIES	1,864.96	5,955.36	5,500.00	-455.36	-8.2793%
3120	COMPUTER SUPPLIES	931.33	3,631.06	3,000.00	-631.06	-21.0353%
3130	CLOTHING, GUARDS UNIFORMS	0.00	0.00	100.00	100.00	100.0000%
3150	SCIENTIFIC	0.00	10.00	2,000.00	1,990.00	99.5000%
3160	FOOD	0.00	0.00	300.00	300.00	100.0000%
3170	AUTOMOTIVE	1,428.71	7,227.57	8,000.00	772.43	9.6554%
3180	OTHER OPERATING SUPPLIES	1,067.25	10,634.17	6,500.00	-4,134.17	-63.6026%
3190	BUILDINGS/GROUNDS SUPPLIES	78.52	3,353.95	7,500.00	4,146.05	55.2807%
	REPAIR/MAINTENANCE SUPPLIES					
3300	AUTOMOTIVE REPAIR	0.00	655.17	700.00	44.83	6.4043%
3310	OTHER REPAIR	4,801.80	17,549.95	10,500.00	-7,049.95	-67.1424%
3320	SOFTWARE	0.00	0.00	2,500.00	2,500.00	100.0000%
	TOTAL SUPPLIES	10,172.57	49,017.23	46,600.00	-2,417.23	-5.1872%
	PROFESSIONAL SERVICES					
3400	ACCOUNTING & AUDITING	0.00	0.00	0.00	0.00	#DIV/0!
3410	MANAGEMENT CONSULTING/LIB	0.00	0.00	0.00	0.00	
3420	ENGINEERING & ARCHITECTURAL	0.00	0.00	0.00	0.00	#DIV/0!
3430	LEGAL					
3440	MEDICAL					
3460	OTHER-ACQUARIUMS	0.00	0.00	0.00	0.00	#DIV/0!
3470	PROFESSIONAL TRAVEL					
	TOTAL PROFESSIONAL SVCS.	0.00	0.00	0.00	0.00	#DIV/0!
	OTHER CHARGES					
3810	MISC. CHARGES-RESEARCH	0.00	0.00	0.00	0.00	
3810	OTHER CHARGES-SUMMER SCHOOL	0.00	0.00	0.00	0.00	
3760	INTERAGENCY TRANSFER OF FUNDS			0.00		
	TOTAL OTHER CHARGES	0.00	0.00	0.00	0.00	
	CAPITAL OUTLAYS					
	ACQUISITIONS					
4400	LAND		0.00	0.00	0.00	
4410	BUILDINGS	0.00	0.00	0.00	0.00	
	MACHINERY & EQUIPMENT					
4420	AUTOMOTIVE	0.00	0.00	0.00	0.00	
4440	BUILDINGS,GROUNDS,ETC.	0.00	0.00	0.00	0.00	
4460	FARM/HEAVY MOVABLE					
4470	HOUSEHOLD	0.00	0.00	0.00	0.00	
4480	SCIENTIFIC	0.00	0.00	3,933.00	3,933.00	100.0000%
4490	OFFICE	0.00	0.00	0.00	0.00	
4500	EDUCATIONAL/RECREATIONAL	0.00	0.00	0.00	0.00	
4510	LIBRARY REFERENCE MATERIALS	-35.00	24,963.37	20,651.00	-4,312.37	-20.8821%
4520	BOATS & AIRCRAFT					
4530	COMMUNICATIONS			0.00	0.00	
4540	OTHER-INFO TECH	0.00	0.00	6,000.00	6,000.00	
	TOTAL ACQUISITIONS	-35.00	24,963.37	30,584.00	5,620.63	18.3777%
				0.00		
	MAJOR REPAIRS					
4600	LAND				0.00	
4610	BUILDINGS				0.00	
	MACHINERY & EQUIPMENT					
4620	AUTOMOTIVE				0.00	
4630	BUILDINGS, GROUNDS, ETC.				0.00	
4670	FARM/HEAVY MOVABLE				0.00	
4680	HOUSEHOLD				0.00	
4700	OFFICE				0.00	
4720	EDUCATIONAL/RECREATIONAL				0.00	
4740	BOATS & AIRCRAFT				0.00	
4730	COMMUNICATIONS				0.00	
4740	OTHER	0.00	0		0.00	
	TOTAL MAJOR REPAIRS	0.00	0.00	0.00	0.00	
	TOTAL CAPITAL OUTLAYS	-35.00	24,963.37	30,584.00	5,620.63	18.3777%
4900	IAT- UPS, OTM, ORM CHARGES	1,114.43	384,791.98	375,691.00	-9,100.98	
		0.00				
	GRAND TOTALS	124,683.41	1,655,653.10	2,080,904.00	425,250.90	20.4359%
			79.5641%	100%	20.4359%	20.4359%

INDIRECT COST RECOVERY

40,575

PERIOD IS JULY 1, 2010 TO JUNE 30, 2011

EXPENDITURES PERIOD IS JULY 1, 2010 TO JUNE 30, 2011 (FNL)

DESCRIPTION	COST CENTER	MONTH EXP.	YEAR TO DATE	YEAR TO DATE	BUDGET BALANCE
REVENUE	LUMCON ADMIN	34,367.64	486,480.08	683,623	197,142.92
BUDGET					
DESCRIPTION	COST CENTER	MONTH	Y-T-D	Y-T-D	BALANCE
SALARIES	LUMCON ADMIN	14,247.86	14,247.86	0	-14,247.86
Administration	PUBLIC INFO SPCLST	-30,277.17	1,600.01	29,330	27,729.99
	CONTRACTS	0.00	0.00	0	
Education	MARINE EDUCATION	-14,599.35	13,413.20	28,000	14,586.80
	UNIVERSITY ED	0.00	34,885.42	0	-34,885.42
	SUMMER SCHOOL	0.00	1,091.20	10,000	8,908.80
Security	SECURITY	0.00	24,431.32	15,000	-9,431.32
Maintenance	MAINTENANCE	0.00	1,490.03	1,000	-490.03
	WILTON DELAUNE/FO	0.00	325.62	1,000	674.38
	GERRI WALKER	0.00	50.35	1,000	949.65
	WAYNE SIMONEAUX	0.00	0.00	0	0.00
	DIVE OFFICER	-110.00	273.23	3,000	2,726.77
	OPEN HOUSE	0.00	0.00	5,000	5,000.00
	SALARY TOTALS	-30,738.66	91,808.24	93,330	1,521.76
FRINGE BENEFITS					
	PUBLIC INFO SPCLST	-11,948.03	655.39	8,800	8,144.61
	UNIVERSITY ED	0.00	13,009.81	8,400	-4,609.81
	MARINE EDUCATION	-4,619.61	6,483.42	6,000	-483.42
	SECURITY	0.00	2,840.66	0	-2,840.66
	OPEN HOUSE	0.00	0.00	1,500	1,500.00
	MAINTENANCE	0.00	25.22	3,000	2,974.78
	WILTON DELAUNE	0.00	0.00	3,000	3,000.00
	GERRI WALKER/FOUR	0.00	0.00	500	500.00
	UNEMPLOYMENT	0.00	2,996.41	10,000	7,003.59
	DIVE OFFICER	0.00	247.07	900	652.93
	SUMMER SCHOOL	0.00	236.24	3,333	3,096.76
	TOTAL FRINGE	-16,567.64	26,494.22	45,433.00	18,938.78
TRAVEL					
	LUMCON ADMIN/OH	0.00	1,775.45	1,500	-275.45
	MAINTENANCE	0.00	41.76	1,500	1,458.24
	SEMINARS	0.00	0.00	3,000	3,000.00
	MARINE EDUCATION	0.00	0.00	500	500.00
	SUMMER SCHOOL	0.00	0.00	500	500.00
	MONITORING STAT.	0.00	0.00	1,000	1,000.00
	DSO TRAINING	0.00	0.00	2,500	2,500.00
	FACULTY-ROBERTS	0.00	1,104.56	0	-1,104.56
	FACULTY-SINCLAIR	0.00	233.40	4,000	3,766.60
	TOTAL TRAVEL	0.00	3,155.17	14,500	11,344.83
OPERATING SERVICES					
	MAINTENANCE DEPT.	21,348.64	30,311.81	20,000	-10,311.81
	AQUARIAMS	0.00	39.72	0	-39.72
	OPEN HOUSE	0.00	426.00	0	-426.00
	LUMCON ADMINISTRATION/FACULTY STRT	213.49	1,952.41	5,000	3,047.59
	SUMMER SCHOOL	2,175.00	3,710.00	8,000	4,290.00
	INFO TECH/MONITO	2,860.04	4,674.58	800	-3,874.58
	MAINTENANCE- "ENTERGY"	15,595.16	24,167.76	15,000	-9,167.76
	OTHER-SEMINAR	0.00	0.00	200	200.00
	DSO	54.22	126.22	1,500	1,373.78
	TOTAL OP. SERVCS	42,246.55	65,408.50	50,500	-14,908.50
SUPPLIES					
	LUMCON ADMIN-FACUL	299.26	623.53	1,000	376.47
	FAC-BROBERTS SETUP	0.00	0.00	1,000	1,000.00
	SEMINARS	0.00	30.00	250	220.00
	DSO COSTS	399.55	565.50	500	-65.50
	FAC- KOLKER SETUP	0.00	66.30	15,000	14,933.70
	L. PRIDE, DIVER CET	0.00	0.00	250	250.00
	MONITORING	0.00	0.00	3,000	3,000.00
	I T - PRINTERS/SPPLS	0.00	0.00	3,000	3,000.00
	MNT-DFFRD	0.00	0.00	2,000	2,000.00
	FAC- SINCLAIR SETUP	7.08	7.08	5,000	4,992.92
	MNT/IT	173.33	594.62	0	-594.62
	MAINTENANCE	6,466.37	7,006.54	20,000	12,993.46
	OPEN HOUSE	41.42	185.17	5,000	4,814.83
	TOTAL SUPPLIES	7,387.01	9,078.74	56,000	46,921.26
PROFESSIONAL SVS	SUMMER SCHOOL	0.00	0.00	9,000	9,000.00
				4 wks @ 662	
ACQUISITIONS					
	ADMIN- 01 SPND OUT	0.00	-14,806.36	0	14,806.36
	SCIENTIFIC - SINCLAIR SETUP	0.00	20,460.19	15,000	-5,460.19
	MAINTENANCE-DFFRD/	0.00	-22,519.00	25,000	47,519.00
	LIBRARY - PERIODICALS & JOURNALS	0.00	0.00	50,000	50,000.00
	SCIENTIFIC - KOLKER S	-5,567.12	-5,567.12	15,000	20,567.12
	INFO TECH	0.00	0.00	5,000	5,000.00
	TOTAL ACQUISITIONS	-5,567.12	-22,432.29	110,000	132,432.29
					0.00
TOTAL EXPENSES		-3,239.86	173,512.58		205,250.42
					0.00
PROFIT OR (LOSS)		37,607.50	312,967.50	683,623	370,655.50
Prior Year Carryover of \$	FY10 721,645.52	ADJ'ED PROFIT	1,034,613.02	1,718,236	683,623.00
	35				
	Indirect Cost Fund Balance		1,034,613.02	1,718,236	683,623.00

INDIRECT COST GENERATED BY PI FY 2010-11, LUMCON

PRINCIPAL INVESTIGATOR	INCLUDES 45 DAY PRIOR YEAR IDC ALSO												% OF TOTAL
	Jul-10 & AUG 10	Sep-10	Oct-10	Nov-10	Dec-10	Jan-11	Feb-11	Mar-11	Apr-11	May-11	Jun-11	TOTALS	
CHESNEY, EDWARD J.	[COMBINED] 2,265.40	2,482.65	2,031.97	3,858.33	6,683.26	4,027.09	5,772.13	5,501.61	4,555.92	3,854.44	3,218.23	44,251.03	9.10%
DAGG, MICHAEL J.	9,863.59	3,479.38	635.35	638.33	659.92	1,232.98	1,690.19	5,549.87	272.46	887.92	506.44	25,416.43	5.22%
SINCLAIR, GEOFFREY	6,410.36	4,502.23	1,825.55	1,499.15	2,241.19	1,504.80	1,942.45	1,780.97	575.26	0.00	0.00	22,281.96	4.58%
KOLKER, ALEXANDER	819.49	1,634.22	1,539.89	2,983.82	2,278.16	1,503.28	1,627.94	2,306.70	2,660.56	2,650.33	1,468.79	21,473.18	4.41%
RABALAIS, NANCY	30,692.60	14,776.13	10,617.60	17,372.97	21,173.95	12,846.26	9,031.36	29,968.18	16,793.95	25,203.75	13,352.03	201,828.78	41.49%
ROBERTS, BRIAN	6,700.23	8,390.76	4,688.72	1,242.59	2,648.82	4,147.31	4,061.91	2,842.26	3,599.75	3,987.31	5,876.15	48,185.81	9.90%
VISSER, JENNEKE	3,437.50	475.00	1,062.50	1,187.50	712.50	4,087.50	0.00	0.00	825.00	75.00	0.00	11,862.50	2.44%
SAMMARCO, PAUL	0.00	1,349.25	172.60	5,990.17	5,069.36	8,071.30	4,212.61	1,545.88	1,133.24	3,463.59	2,570.38	33,578.38	6.90%
CONOVER, JENNIFER 'MURT'	856.26	55.00	0.00	37.72	68.50	25.91	90.21	131.67	0.00	1,599.97	451.19	3,316.43	0.68%
ST. PE', KERRY	14,308.17	6,440.08	5,020.11	3,147.10	10,308.42	9,471.44	4,087.61	4,502.77	6,993.37	3,082.08	6,924.43	74,285.58	15.27%
CONOVER, JOHN	0.00	0.00	0.00	0.00	0.00	0.00	0.00	0.00	0.00	0.00	0.00	0.00	0.00%
TOTALS	75,353.60	43,584.70	27,594.29	37,957.68	51,844.08	46,917.87	32,516.41	54,129.91	37,409.51	44,804.39	34,367.64	486,480.08	100.00%

AVERAGE GENERATED PER MNTH:
\$486,480.08 DIVIDED BY 12 = \$40,540

BARATARIA-TERREBONNE NATIONAL ESTUARY PROGRAM

FY 2010-2011 BUDGET W/ MID-YEAR CUT
PERIOD IS JULY 1, 2010 TO JUNE 30, 2011

USE VS. FAVORABLE BALANCE
20 OF 27 PAYROLLS = 74% >26%
9 OF 12 MONTHS = 75% >25%

CURRENT REPORTING PERIOD IS TO MAR. 31, 2011

OBJECT CODE	LINE ITEM	BUDGET	MONTH MARCH	YTD 3/31/2011	REQ OR P.O.	BALANCE	% BALANCE
	SALARY:						
3670	SALARY UNCLASSIFIED	279,143.00	27,008.80	273,085.39		6,057.61	2.17%
	STUDENT LABOR	0.00	0.00	0.00		0.00	#DIV/0!
	TERMINATION PAY	0.00	0.00	0.00		0.00	
	TOTAL SALARY	279,143.00	27,008.80	273,085.39		6,057.61	2.17%
					0.00		
	FRINGE BENEFITS:						
	MID-YEAR CUT	-6,050.00	0.00	0.00		-6,050.00	100.00%
2300	STATE RETIREMENT	55,000.00	5,115.74	51,158.23		3,841.77	6.99%
2320	TEACHERS' RETIREMENT	5,593.00	668.16	6,669.07		-1,076.07	-19.24%
2350	F.I.C.A. TAX	200.00	27.76	467.27		-267.27	-133.64%
2360	MEDICARE	2,000.00	265.36	2,712.73		-712.73	-35.64%
2380	GROUP INSURANCE	27,000.00	2,949.24	26,543.16		456.84	1.69%
	UNEMPLOYMENT - J MCKORR	0.00	0.00	0.00		0.00	#DIV/0!
	TOTAL FRINGE	83,743.00	9,026.26	87,550.46		-3,807.46	-4.55%
2520	TRAVEL	0.00	0.00	0.00		0.00	#DIV/0!
	OPERATING SERVICES:						
2700	ADVERTISING	500.00	0.00	0.00		500.00	100.00%
2710	PRINTING	0.00	0.00	0.00	0.00	0.00	#DIV/0!
2720	INSURANCE-AUTO	739.00	0.00	739.00	0.00	0.00	0.00%
2730	INSURANCE-WORK.COMP.	1,183.00	0.00	1,183.00		0.00	0.00%
2740	INSURANCE-FIRE & EXT.	268.00	0.00	268.00		0.00	0.00%
2760	INSURANCE-OTHER	1,438.00	0.00	1,438.00	0.00	0.00	0.00%
2770	MAIN. & REPAIR-AUTO	5,000.00	372.15	2,760.57	0.00	2,239.43	44.79%
2800	EQUIPMENT MAINTENANCE	500.00	0.00	0.00	0.00	500.00	100.00%
2830	RENTAL-BUILDING	0.00	0.00	0.00		0.00	#DIV/0!
2840	RENTAL-EQUIPMENT	3,000.00	190.40	1,288.83	717.57	993.60	33.12%
2870	RENTAL-OTHER	2,700.00	0.00	1,450.00		1,250.00	46.30%
2890	DUES & SUBSCRIPTIONS	5,500.00	4,500.00	5,235.00		265.00	4.82%
2900	POSTAGE	4,500.00	55.20	2,823.23		1,676.77	37.26%
2910	TELEPHONE SERVICE	4,219.00	383.87	2,811.96		1,407.04	33.35%
2930	TELEPHONE-OTHER SERV.	1,000.00	79.98	479.88		520.12	52.01%
2980	FREIGHT	1,500.00	0.00	0.00		1,500.00	0.00%
3000	MISC. OPERATING	7,027.00	368.42	3,392.32		3,634.68	51.72%
	MID-YEAR CUT	-14,960.00					
	TOTAL OPER. SERV.	24,114.00	5,950.02	23,869.79	717.57	-473.36	-1.96%
	SUPPLIES:						
3100	OFFICE SUPPLIES	9,000.00	0.00	2,666.36	0.00	6,333.64	70.37%
3120	COMPUTER SUPPLIES	6,000.00	0.00	3,109.28		2,890.72	48.18%
3130	CLOTHING SUPPLIES	2,000.00	0.00	94.97		1,905.03	95.25%
3150	EDUCATIONAL SUPPLIES	1,000.00	0.00	238.93		761.07	76.11%
3160	FOOD SUPPLIES	1,500.00	0.00	16.61		1,483.39	98.89%
3170	AUTO SUPPLIES	10,000.00	420.53	5,670.09	0.00	4,329.91	43.30%
3180	OTHER SUPPLIES	2,616.00	138.92	1,245.06		1,370.94	52.41%
3300	AUTO MAIN. SUPPLIES	3,000.00	0.00	0.00		3,000.00	100.00%
3320	SOFTWARE	5,000.00	19.95	1,190.14		3,809.86	76.20%
	MID-YEAR CUT	-21,607.00					
	TOTAL SUPPLIES	18,509.00	579.40	14,231.44	0.00	4,277.56	23.11%
	ACQUISITIONS						
4400	EQUIPMENT	8,000.00	0.00	0.00	0.00	8,000.00	100.00%
		0.00	0.00	0.00		0.00	
	TOTAL ACQUISITIONS	8,000.00	0.00	0.00	0.00	8,000.00	100.00%
	TOTAL	413,509.00	42,564.48	398,737.08	717.57	14,054.35	3.40%

3.40%

VESSEL OPERATIONS-JULY 1, 2009 TO JUN 30, 2010
674003 EXCLUDING CC# 2211 & 2212

REVENUES: ACTUAL BILLINGS
FOR FY09-10 as of
30-Jun-10

ACADIANA	161,658.40
ELECTRONIC TECH	224,326.20
PELICAN	1,516,359.80
SMALL BOATS	105,776.60

TOTAL	0.00	0.00	0.00	2,008,121.00	0.00	
	ADMINISTRATION	PELICAN	ACADIAN	SMALL BOATS	ELECTRONICS TECH	TOTALS
TOTAL INCOME	0.00	1,516,359.80	161,658.40	105,776.60	224,326.20	2,008,121.00
EXPENSES:	3103 ADMINISTRATION	3105 PELICAN	3106 ACADIAN	3104 SMALL BOATS	3125 ELECTRONICS TECH	TOTALS
SALARIES						
REGULAR:	127,710.00	334,612.00	40,821.00	15,079.00	55,219.00	573,441.00
OVERTIME:	0.00	231,052.00	13,034.00	8,423.00	35,832.00	288,341.00
TOTAL SALARIES	127,710.00	565,664.00	53,855.00	23,502.00	91,051.00	861,782.00
FRINGE BENEFITS	38,933.00	120,191.00	15,116.00	7,816.00	19,848.00	201,904.00
TRAVEL	0.00	7,179.00	0.00	1,335.00	3,992.00	12,506.00
OPERATING SERV.	76,466.00	294,818.00	67,167.00	12,708.00	43,793.00	494,952.00
ENCUM		0.00	0.00			0.00
SUPPLIES	0.00	427,863.00	82,794.00	28,205.00	40,903.00	579,765.00
ENCUM		0.00			0.00	0.00
PROFESS SERV.	0.00	19,499.00	0.00	0.00	0.00	19,499.00
ACQUISITIONS	0.00	50,813.00	50,604.00	2,777.00	26,175.00	130,369.00
ENCUM		0.00	0.00		0.00	0.00
MAJOR REPAIRS	0.00	0.00	0.00	0.00	0.00	0.00
ENCUM		0.00				0.00
TOTALS	243,109.00	1,486,027.00	269,536.00	76,343.00	225,762.00	2,300,777.00
BALANCE	(243,109.00)	30,332.80	(107,877.60)	29,433.60	(1,435.80)	(292,656.00)
INDIRECT COST		159,452.28				159,452.28
BALANCE AFT.IDC	(243,109.00)	(129,119.48)	(107,877.60)	29,433.60	(1,435.80)	(452,108.28)

VESSEL'S FUND BALANCE AS OF JUNE 30, 2009 381,380.10

VESSEL'S FUND BALANCE AS OF 6/30/10 -70,728.18

ASST. DIR'S ? INDIRECT COST RECOVERY 886,115.99
BALANCE 6/30/09

INDIRECT COST GENERATED FOR FY09-10 159,452.28
LESS

ENCUMBERED Hydradyne -395,061.00

CURRENT INDIRECT COST RECO 650,507.27

NET OF VESSEL FUND BALANCE AND AD'S INDIRECT COST **579,779.09**

0.00 + 381,380.10
6/30/10 VESSEL FUND BAL 6/30/10 INDIRECT COST BAL

VESSEL OPERATIONS-JULY 1, 2010 TO JUN 30, 2011
674003 EXCLUDING CC# 2211 & 2212

REVENUES: ACTUAL BILLINGS as of
 FOR FY10-11 30-Jun-11

ACADIANA	173,620.00
ELECTRONIC TECH	290,846.65
PELICAN	1,692,922.43
SMALL BOATS	97,668.22

TOTAL	0.00	0.00	0.00	2,255,057.30		0.00
	ADMINISTRATION	PELICAN	ACADIAN	SMALL BOATS	ELECTRONICS TECH	TOTALS
TOTAL INCOME	0.00	1,692,922.43	173,620.00	97,668.22	290,846.65	2,255,057.30
EXPENSES:	3103 ADMINISTRATION	3105 PELICAN	3106 ACADIAN	3104 SMALL BOATS	3125 ELECTRONICS TECH	TOTALS
SALARIES						
REGULAR:	130,510.00	361,367.00	30,315.00	16,649.00	64,399.00	603,240.00
OVERTIME:	138.00	241,726.00	11,816.00	4,607.00	53,638.00	311,925.00
TOTAL SALARIES	130,648.00	603,093.00	42,131.00	21,256.00	118,037.00	915,165.00
FRINGE BENEFITS	45,034.00	110,809.00	8,347.00	7,474.00	28,151.00	199,815.00
TRAVEL	0.00	4,713.00	363.00	275.00	2,986.00	8,337.00
OPERATING SERV.	76,466.00	271,506.00	85,971.00	19,218.00	32,671.00	485,832.00
ENCUM		0.00	0.00		0.00	0.00
SUPPLIES	0.00	432,281.00	60,869.00	43,628.00	31,801.00	568,579.00
ENCUM		0.00			0.00	0.00
PROFESS SERV.	0.00	(4,871.00)	0.00	0.00	0.00	-4,871.00
ACQUISITIONS	0.00	11,815.00	7,532.00	25,186.00	25,436.00	69,969.00
ENCUM		0.00	0.00		0.00	0.00
MAJOR REPAIRS	0.00	0.00	0.00	0.00	0.00	0.00
ENCUM		0.00				0.00
TOTALS	252,148.00	1,429,346.00	205,213.00	117,037.00	239,082.00	2,242,826.00
BALANCE	(252,148.00)	263,576.43	(31,593.00)	(19,368.78)	51,764.65	12,231.30
INDIRECT COST		157,487.69				157,487.69
BALANCE AFT.IDC	(252,148.00)	106,088.74	(31,593.00)	(19,368.78)	51,764.65	(145,256.39)

VESSEL'S FUND BALANCE AS OF JUNE 30, 2010 -70,728.18

VESSEL'S FUND BALANCE AS OF 6/30/11 -215,984.57

ASST. DIR'S ? INDIRECT COST RECOVERY 650,507.27
 BALANCE 6/30/10

INDIRECT COST GENERATED FOR FY10-11 157,487.69

LESS

ENCUMBERED -501,624.44

CURRENT INDIRECT COST RECOVERY BALANCE 306,370.52

NET OF VESSEL FUND BALANCE AND AD'S INDIRECT COST 90,385.95

-215,984.57 + 306,370.52
 6/30/11 VESSEL FUND BAL 6/30/11 INDIRECT COST BAL

DESCRIPTION	CAFE	DORMS	FOURCHON	TOTALS
IN STATE TREASURY	54,044.83	102,782.00	12,461.00	169,287.83
ACTUAL INVOICES TO 6/30/2011	57,373.33	99,264.10	12,406.00	169,043.43
TOTAL INCOME	57,373.33	99,264.10	12,406.00	169,043.43

EXPENSES:

TOTAL EXPENSES	101,262.00	2,587.00	131.00	103,980.00
----------------	------------	----------	--------	------------

NET BALANCE	(43,888.67)	96,677.10	12,275.00	65,063.43
-------------	-------------	-----------	-----------	-----------

40